

COURSE GUIDE

IGB 241 IGBO PHONOLOGY 1

Course Team

Dkt. Linda Chinelo Nkamigbo (Odee)
 Ngalaba Lingwistikis,
 Mahadum Nnamdi Azikiwe, Awka (Department of
 Linguistics, Nnamdi Azikiwe University, Awka)
 Prfes B. M. Onyemaechi (Odezi Mbah)
 Ngalaba Lingwistikis, Igbo na Asis Na jira Nd
 z, Mahadum Na jira, Nsaka.
 (Department of Linguistics, Igbo and Other
 Nigerian Languages)
 Prfes Herbert Igboans (Chkwa)
 Ngalaba Lingwistikis na Asis Afrka, Mahadum
 Ibadan, Ibadan
 (Department of Linguistics and African Languages,
 University of Ibadan, Ibadan, Nigeria)



NATIONAL OPEN UNIVERSITY OF NIGERIA

© 2021 by NOUN Press
National Open University of Nigeria
Headquarters
University Village
Plot 91, Cadastral Zone
Nnamdi Azikiwe Expressway
Jabi, Abuja

Lagos Office
14/16 Ahmadu Bello Way
Victoria Island, Lagos

e-mail: centralinfo@nou.edu.ng

URL: www.nou.edu.ng

All rights reserved. No part of this book may be reproduced, in any form or by any means, without permission in writing from the publisher.

Printed 2021

ISBN:

ND NA**IHU AKW KW**

Mkp lite.....	iv
Mbunuche izugbe.....	iv
Mbunuche kp m kwem.....	iv
Ngwa ihe m m	iv
Yunit ihe m m	v
Akw kw g g na nr t aka.....	v
Nnwale.....	v
Ihe omume.....	vi
Ule na enyemmaak	vi
Uso ro enyemmaak	vi
Ka a ga-esiritekaricha uru ihe m m a.....	vi
Nd nduzi na nkuzi.....	vii
Nch k ta.....	vii

MKP LITE

IGB 241: *F n l j Igbo I b ihe m m nke nwere yunit ab . E wep taara ya maka m akw kw nd n n'agba ag makw kw af nke ab ha n'ag makw kw maka nzere B.A. (Igbo). Ihe m m a-na-ak zi akp makp na usoro mkp r da. A haziri am mam a na modul an , nd ga-enyere m akw kw aka m taakp makp na nke da as s n'uju. Nke a p tara na ha ga-eleba anya na nk wami akp makp na nke da as s ; nnyocha, d na nn na ebe mkp r da as s ; usoro usoro mkp r da na da olu.*

MBUNUCHE IZUGBE

Mbunuche ihe m m a b k ziakp makp na usoro mkp r da. ga-am akp makp na alaka ya d iche iche. A ga-ak zikwa usoro mkp r da na mkp r da as s . Nke a ga-ak wa mkp r edemedede na mkp r da as s ma t lee myiri na nd miche ha. A ga-ak zi da-ume, d d na ebe mkp p ta daume. N'otu aka ah , a ga-am gbasaramgbochiume, k wakwa d d na ebe mkp p ta ha ma lebaa anya na nkeji okwu Igbo na ihe nd mejup tara ya. Ihe ga-esote b usoro usoro mkp r da ga, ebe a ga-am maka olilo da-ume, ndap mkp r da as s , ns kw nye/mkpafa da na mkp so. ga-am kwa maka da olu. N'ime nke a, m akw kw ga-am nk wa na d d da olu, r da olu na-ar n'as s Igbo, ihe nd kwesiri ka a mata banyere kanye akara da olu na mkp r okwu, tinyekwara usoro nkanye akara da olu.

MBUNUCHEKP M KWEM

Yunit iri na asat d n'ihe m m a. Yunit b la nwere mbunuche nke ya. d mkpa na m akw kw g r mbunuche yunit b la; mbunuche ihe m m a g nyere:

- a. ma ihe na-eme gas mgbe a na-eme ekwumekwu
- b. m ta ihe nd na-ap ta ihe na mkp p ta mkp r da as s
- ch. mata nd miche d n'etiti ederede na akp m da
- d. imenwata akw kw jiri ihe m tara n'ihe m m a k waa usoro mkp r da nd z

NGWA IHE M M

Ihe nd mejup tara ihe m m a b :

- a. Mkp lite ihe m m
- b. Yunit Am mam Ga
- c. h. Ng mi
- d. Ihe Omume Ga
- e. Nhazi

YUNIT IHE M M**Modul 1 Nk wami akp makp na da as s**

- Yunit 1 Aj j sayens na-aj banyere mkp r da
 Yunit 2 Nk wa akp makp
 Yunit 3 Alaka akp makp
 Yunit 4 Nk wa usoro mkp r da na mkp r da as s
 Yunit 5 Myiri na nd miche d namkp r edemedede na mkp r da as s

Modul 2 Nk cha, d d na nn na ebe mkp r da as s

- Yunit 1 Nk wa daume
 Yunit 2 d d na ebe mkp p ta daume
 Yunit 3 Nk cha mgbochiume
 Yunit 4 d d na ebe mkp p tamgbochiume
 Yunit 5 Nkeji okwu

Modul 3 Usoro usoro mkp r da ga

- Yunit 1 Olilo daume
 Yunit 2 Ndap mkp r da as s
 Yunit 3 Mkpafanye da
 Yunit 4 Mkp so

Modul 4 daolu

- Yunit 1 Nk wa na d d da olu
 Yunit 2 r daolu na-ar n'as s Igbo
 Yunit 3 kanye akara da olu na mkp r okwu: Ihe nd kwesiri ka a mata
 Yunit 4 Usoro nkanye akara da olu

AKW KW G G NA NR T AKA

Yunit b la nwere nr t akana ng mi ga na njedebe ya. Ng mi nd ah ga-enyere g aka g mi isiokwu b la ag mi.

NNWALE

A ga-esi na nkwale, ihe omume na ule kp m kw m t lee mmetadebe g .

IHE OMUME

Yunit b la nwere ihe omume. d nnukwu mkpa na dere ha niile ma nyefee ha maka nt le. Onye nk zi g ga-at le ihe omume n'aj j nnwale niile ma h r nd kachas mma a ga-agbakw nyere ule.

ULE NA ENYEMMAAK

Na ngw cha ihe m m a, ga-ele ule nke ga-ebu pasent iri asaa (70%). Ule ah ga-ewe awa ab ; a ga-enye g aj j ise nke a t r anya na ha ga-aza at n'ime ha.

USORO ENYEMMAAK

Tebul a d n'okpuru na-egosi etu e siri kerie maak ihe m m a.

Nt le	Maak
Ihe omume	A ga-ah r ihe omume nd kacha mma. Ha ga-agbak ta pasent iri at (30%).
Ule kp m kw m	Maak ya ga-ab pasent iri asaa (70%).
Mgbak ta	100%

KA GA-ESIRITEKARICHA URU IHE M M A

N'am mam d anya (nke e nwere ike kp ar ag), yunit am mam na-an chi anya nk zi mahadum. Otu n'ime uru am mam d anya bara b na ga na-ar r ma na-ag kwa akw kw n'otu aka ah na mgbe d g mma. b z gh n d ala na klas na-ege onye nk zi nt .Yunit am mam d iche iche n chiri anya ihe onye nk zi ga-ak zi. E nwekwara ihe omume d iche iche na ngw s nkega b la nd ga-enyere g aka m ghar ihe g r la.

Yunit niile gbasoro otu usoro. Ihe mb b ndubanye ebe a k wara ihe yunit b la ga-ak zi. Nke na-esote ya b mbunuchenke ga-eme ka mata ihe a t r anya n'aka g na ngw s yunit ah . b ihe d ezigbo mkpa na ga-al ghachi az t lee ma i mezuru mbunu che nd ah tupu gawa na yunit z . Ihe na-esote b nd na kp m kw m ebe a k ziri ihe n'uju. I lee anya ga-ah ihe omume na-esote tinyekwara aj j nnwale. b iwu na ga-eme ihe omume ma zaa aj j niile n'ihi na ha nwere maak nke a ga-agbak nyere maak ule. Yunit b la nwere mmechi na nch k ta ebe a ch k tara ihe a k zirila.

b r na o nwere ihe mgbagwoju anya i nwere ka na-ag ederede a, kp t r onye nduzi g maka enyemaka. Gbaa mb h na na-agaru

n'ebe m m kwa mgbe kwa mgbe i ji mata mgbe ga-ele ule na ozi nd z d mkpa.

ND NDUZI NA NKUZI

A ga-eme ka mata b ch , oge na ebe a ga-enwe m m akw kw tinyekwara aha onye nduzi g , akara ekwent ya na ebe ga-ah ya. Gbaa mb h na deziri ndehie onye nduzi g ga-egosi g . Nke a ga-enyere g aka ime nke ma na ihe m m a. N'otu aka ah , gbaa mb h na i nyefere ihe omume g oge na mgbe o kwes r ka ghara iti ngaraamara. d oke mkpa na ghagh m m akw kw maka na b ya ga-enye g ohere ihu onye nduzi g ihu na ihu ma nwetekwa enyemaka na nkega nd na-ah a g ah .

NCH K TA

b r na na-ag ederede a, d otu ihe ma b ab chere ya n'ihu. b mmad nwee as s . N'agbanyeghi etu m an man si akpar ta n'etiti ha, ha agagh eji as s na-eme ya. b naan mmad nwere as s . Ihe z d mkpa b na g nwere ike b onye Igbo, nke p tara na Igbo b as s epum ya; onwere ike g ab gh onye Igbo kama na na-am Igbo; nke a p tara na Igbo b as s nke ab (A₂) ya. Ihe z kwa b na b r na g na-ag ederede a, a mara na ma etu esi ag na etu esi ede Igbo. Nke a p tara na ma iwu ns pe na mkp p ta Igbo.

Kedu ihe nk zi a ga-abara nwata akw kw ? Am mam akp makp na usoro mkp r da ga-enyere ya aka mata ihe ha amabughi gbasara as s Igbo, d ka akp m da. ga-am takwa ihe f d ad gh n'olund na-as . ga-enwe ike k waa d ihe h r n'Igbo d kwa n'as s nd z .

**MAIN
COURSE**

NDINA	PAGE
Modul 1	1
Yunit 1	1
Yunit 2	6
Yunit 3	10
Yunit 4	17
Yunit 5	27
Modul 2	32
Yunit 1	32
Yunit 2	37
Yunit 3	43
Yunit 4	51
Yunit 5	67
Modul 3	72
Yunit 1	72
Yunit 2	77
Yunit 3	80
Yunit 4	82
Modul 4	87
Yunit 1	87
Yunit 2	91
Yunit 3	95
Yunit 4	99

MODUL 1 NK WAMI D D DA NA D D DAAS S

Na modul a, ga-am maka d d da na d d daas s . N'ime nke a, ga-ag banyere akp makp na alaka ya ga, usoro mkp r da na mkp r daas s nakwa mmek r ta d na mkp r edemede na mkp r da as s . Aj j mb i kwes r j onwe g b nke a, 'G n b akp makp ?' Akp makp d ka aha ya siri daa b am mam na-enyocha, na-ak wap ta ma na-ahazikwa da okwu niile mmad nwere ike kp p ta. na-egosip ta etu e si emep ta da b la p tara na mkp r okwu nakwa ak k ah d iche iche e ji mep ta ya. O nwere alaka at p takar chara ihe kemgbe am mam a malitere. Ha b mkp p ta da, nt da na n n da. Mana o nwekwara otu alaka a ch p tara n'af ole na ole gara aga a na-akp f r nsik. ga-am maka ha n'uju na nkegas nd na-esote. Usoro mkp r da na mkp r daas s b z d iche iche e si edok da ha ewee gh mkp r na ah r okwu. Mkp r daas s na mkp r edemede b ihu ab nke otu mma. b mkp r edemede ka e ji edetu mkp r okwu ma were mkp r da as s na-akp p ta okwu. Mkp r edemede Igbo izugbe d iri at na isii e ji ede edemede na-an chi anya mkp r da as s Igbo izugbe d kwa iri at na isii e ji akp akp makp .

Nkegas d na modul 1 g nyere:

Yunit 1	Aj j sayens na-aj banyere mkp r da
Yunit 2	Nk wa akp makp
Yunit 3	Alaka akp makp
Yunit 4	Nk wa usoro mkp r da na mkp r da as s
Yunit 5	Mmek r ta d namkp r edemede na mkp r da as s

YUNIT 1 AJ J SAYENS NA-AJ BANYERE MKP R DA

ND NA

- 1.0 Mkp lite
- 2.0 Mbunuche
- 3.0 Nd na kp m kw m
 - 3.1 Ndubanye ke d d da
- 4.0 Mmechi
- 5.0 Nch k ta
- 6.0 Ihe Omume
- 7.0 Nr t aka/Ng mi

1.0 MKP LITE

Otu n'ime aj j sayens ga a na-aj gbasara as s b 'G n nwere ike b mkp r da?' Mmad nwere ike kp p ta t t mkp r da kar a nd d n'as s ya. Mana akp m da nwere oke. A na-akp p ta mkp r da site naan n' n na n'imi n'agbata oke egbugbere n na gw r . O nwegh as s akp makp ya sitere n'ak maka ma b n' gba mkp s aka. A b akwa n'ime n o nwegh as s amarala a na-akp p ta site n'igbu mkp r f f ma b nkumi ume. Ka o sila d , d mkpa mata na mkpar ta ka na-ap takwa ihe n'omume nd a n'agbanyegh na ha ab gh mkp r da.

Aj j gbasara ihe nwere ike b mkp r da gbagwojuru anya. t lee as s nd ogbi ga-ah na b mp tara mmeghar ah d iche iche kachas mmeghar aka b mkp r da.

Lee m ma at nd a:





Ihe ngosi nd a d ga n’elu b mkpar ta ka ogbi d ga iche iche. As s ogbi t nyekwara t na mmep ta at t as s d iche iche. E meela nch cha banyere usoro as s ogbi mana enwebegh kp r kp nch cha banyere d d da as s ogbi. N’agbanyegh na nd kamm ta ebidola nch cha gbasara d d da as s , any agagh aga n’ihu n’ kpa maka ya ebe a. kp r kp aj j kwes r ka a zaa b : Olee ihe nd a ga-agbado kw n’ikewap ta mkp r da?

2.0 MBUNUCHE

Na ngw cha yunit a, ga-enwe ike:

- k wa ihe na-ebute njasa mkp da
- m ta ihe nd na-enyere aka na mmep ta damp ta
- mata d da a ga-akp p ta mgbe mkp da n n’ n d nsinachi

3.0 ND NA KP M KWEM

3.1 Ndubanye ke d d da

N’idubata ngh ta nke d mkp r da, Odden (2013) dep tara z ihe ab kwesiri k wa nke ma. Nke mb , a na-ekewa mkp r da site n’ n d n na-an tupu e kwube okwu. d n d a, d ka na mkp p ta daume [ε], na-ak wap ta etu ire si emeghar n’oge a na-akp p ta da. Nke ab , kwes r mata etu mkp da si emeghar mgbe a na-akp p ta da n’ihi na n d mkp da mgbe a na-akp p ta da na-eweta nd iche n’etiti mkp r da na ibe ya. Mkp da na-emeghar mgbe e nwere ikuku zuru oke n’okpuru eko akp r nke ga-eme ka mkp da jasaa. Njasa a na-ebelata ikuku d n’okpuru eko akp r . Mgbe nke a

mere, mkp da emechie. Ihe na-ebute njasa mkp da b na ikuku d n'okpuru eko akp r rikar r ikuku d n'elu ya.

Odden gara n'ihu ime ka a mata na ikuku si na ng ekup ta oge niile. b n d mkp da na-an na-egosi ma e nwere okukuume zuru ezu ga-ajasa mkp da. Ihe nd na-enyere aka na mmep ta damp ta b n d mkp da na okukuume d n'elu eko akp r . b r na ikuku d n'elu eko akp r na nke d n'okpuru eko akp r ha nhatanha, ikuku agagh agaghar z nke mere na agagh enwe akp makp ndamp ta. Ya mere, b r na e nwee mgbochi ikuku n' n (d ka na mkp p ta daike keakponro enweolu [k]), mara na ikuku d n'elu eko akp r na nke d n'okpuru eko akp r ha nhatanha. N'aka nke z , b r na e nwegh mgbochi ikuku n'oge mkp p ta (d ka na mkp p ta daume oghe ihu njasa [a]), mara na ikuku na-agafe s r r werere.

Anagh enwe mgbochi ikuku n'oge mkp p ta f d mkp r da d ka daume n'ih i nke a, nnweolu na-ad mfe. Mana nagh ad mfe inwe nnweolu na mkp p ta mgbochiume niile. Nd iche d etu a ka Chomsky na Halle (1968) kp r 'nnweolu gidigbam' nke gbadoro kw na ngh ta na mgbe b la mkp da n n' n d nsinachi, mkp r da a ga-akp p ta ga-ab da nnweolu.

NNWALE ONWE

- i. G n na-ebute njasa mkp da?
- ii. Olee Ihe nd na-enyere aka na mmep ta damp ta?
- iii. Ked d da a ga-akp p ta mgbe mkp da n n' n d nsinachi?

4.0 MMECHI

Tupu banye n'ihe m m d d da na d d daas s kp m kw m o kwes r ka mata ihe ole na ole na-eme e ji enwe myiri na nd iche n'etiti mkp r da na ibe ya. b ihe nd a ka a k waara g na yunit a.

5.0 NCH K TA

kp r kp ihe nd lebara anya na yunit a g nyereihe na-ebute njasa mkp da, ihe nd na-enyere aka na mmep ta damp ta, d da a ga-akp p ta mgbe mkp da n n' n d d iche iche, dg.

6.0 IHE OMUME

K waa ihe na-eme n'oge nd a:

1. mgbe ikuku d n'elu eko akp r na nke d n'okpuru eko akp r ha nhatanha
2. oge ikuku na-agafe s r r werere

7.0 NR T AKA/NG MI

Chomsky, N. and M. Halle. (1968). *Sound pattern of English*. MIT: Harper & Row.

Odden, D.A. (2013). *Introducing Phonology*. Cambridge: Cambridge University Press.

YUNIT 2 NK WA AKP MAKP

ND NA

- 1.0 Mkp lite
- 2.0 Mbunuche
- 3.0 Nd na kp m kw m
 - 3.1 Nk wa akp makp
 - 3.2 Nd miche d n'akp makp na usoro mkp r da
- 4.0 Mmechi
- 5.0 Nch k ta
- 6.0 Ihe Omume
- 7.0 Nr t aka/ng mi

1.0 MKP LITE

Usoro da b otu n'ime kp r kp ngalaba at e nwere na say ns as s . Alaka say ns as s a na-ah maka akp makp na usoro mkp r da. Ngwa r akp makp na usoro da b da. Clark, Yallop na Fletcher (2007) k wara da d ka, "mkp t si n' n ap ta."

E nwere ihe d iche iche na-emep ta da. Iji maa at , gb ala, gb elu, gbatumtum na-emep ta da; ngwa egwu d che na-emep takwa da. An man niile na-akp p ta da site n'ibe r a mana b gh ha dum na-akp p ta da d n'usoro ka nke as s mmad . b naan mmad na-akp p ta da nwere ngh ta mana b chagh da niile mmad na-akp p ta nwere ngh ta. da d ka etutu, akwa, ughere na kwara enweghi ngh ta. Ebe akp makp na usoro mkp r dana-agbado kw b n' da nd ah mmad na-eme d ka ikwu okwu, nke e si na ha enweta ngh ta echiche.

d d dana usoro mkp r da nwere mmas n'ebe da d mana e nwegas r nd miche d n' z ha si eji da ar r . d d dana-ah ta da d kaihe e nwere ike k wap ta mkp p ta ya, nt da ya, na n n ya n'ar t gh aka n'as s ebe p tara ihe. N'aka nke z , usoro mkp r dagbadoro kw n'izip ta r d iche iche da na-ar n'as s b la. Nke a p tara na na-enyochap ta myiri na nd miche d na mkp r da d n'as s . Mkp r da as s b da, nke nwere ike izip ta nd miche d na ngh ta mkp r okwu ab ma b kar a n'as s .

2.0 MBUNUCHE

Na ngw cha yunit a, ga-enwe ike:

- k waa ihe akp makp b
- k waa ihe usoro mkp r da b
- gosi nd miche d n'etiti akp makp na usoro mkp r da

- k wap ta da nd anagh enwe ngh ta.

3.0 ND NA KP M KW M

3.1 Nk wa akp makp

d d dab m m mkp p ta da. b am mam say ns na-ah maka njirimara mmep ta da, nke mmad kachas da nd na-ap ta ihe n'okwu. Nke a p tara na akp makp b say ns da okwu. b n'af 1741 ka a malitere m m da. d d dana-egosip ta usoro nt cha, d na ndet da n'usoro mkp p ta d iche iche (Ikeke nw , 2000). Alaka at , nke am mam a, p takar chara iheg nyere:

a. **mkp p ta da**: na-ah maka ngak ngwa mkp p ta (gan okwu) d iche iche n' kp p ta da.

b. **nt da**: na-eleba anya na nd na da a kp p tara (site n' n ruo na nt).

ch. **n n da**: na-am etu da si esin'udu nt eru n' b r maka ngh ta.

Akp makp dab am mam mb ak ngwa na usoro mkp p ta da. Nd kachamara n'am mam akp makp ka a na-akp ka akp makp .

t t mkp r okwu e ji ak wa ihe n'am mam akp makp b nd e si na ngalaba am mam d ka bay l ji na fiziks webata. Iji maa at , ebe mkp p ta (any r , akp ike, akp nro, dg) b nd r izizi ha gbasatara nd . Nd z d kammerole na ebili da b kwa nd e sitere na fiziks webata. b n'ihina z nt cha niile nd a baara da uru n'agbanyeghi as s ma b onye na-as ya ka e ji akp kar am mam a akp makp izuzugbe.

E nwekwara ngalaba akp makp , nke na-egosi na am mam a b say ns . Ngalaba a ka a na-akp akp makp mmado. E kere r akp makp z ab : nke mb b igosip ta usoro mkp p ta, nd na da na nn ta da; nke ab b igosi mp tara da n'as s d iche iche. z nke ab a gosiri na e kwesiri inwe ngalaba z na-ah maka mkp k da. Ngalaba a na-ah etu da si eso onwe ha ka a na-akp usoro mkp r da (fon l ji).

NNWALE ONWE

- i. Gn b akp makp ?
- ii. Olee af a malitere m akp makp ?
- iii. ch. Gn b ngwa mkp p ta?
- iv. Kedu ihe ngalaba akp makp ji b r say ns ?

3.2 Nd miche d n'akp makp na usoro mkp r da

A b a n'akp makp , ihe a na-akp da b mkp t okwu mana a na-akp yamkp r da n'usoromkp r da. da b la mmad mep tara ka a na-akp da mana mkp r da b da na-enye aka n'iweta echiche d iche na mkp r okwu ab ma b kar a mkp r edide ha yiri.

da b la bara uru n'akp makp mana b naan da nd na-eweta mgbanwe n'echiche bara uru n'usoro mkp r da. m ma at , a b a n'as s Igbo, akp makp ga-eme ka a mata na e nwere da nd a – dar [r] na dar mkp nimi [r] mana b usoro mkp r da ka d r k wa na dar mkp nimi [r] anagh eweta mgbanwe ngh ta n'Igbo. Otu onye so na nd mb malitere nch cha usoro mkp r da nd mba Afr ka b Peter Ladefoged. b n'af 1964 ka e bip tara r mb ya.

Ladefoged (2006) k wara na d d da na-ak wa maka da niile mmad nwere ike kp p ta, d na etu e si akp p ta ha mana ihe gbasakar chara usoro mkp r da b ihe d iche n' da na ibe ya, tinyerekwara etu ha si ab ak ta n na mmep ta okwu.

d ndem daakp makp b na nh ebe nke usoro mkp r da b n'uju (h Ladefoged, 2006).

NNWALE ONWE

- i. G n b mkp r da?
- ii. Ked onye mb malitere nch cha usoro mkp r da nd mba Afr ka?

4.0 MMECHI

d d da b say ns da okwu malitere n'af 1741. d d da na-egosip ta usoro nk cha, nken d na ndem da d iche iche. Alaka am mam at p takar chara ihe b : say ns mkp p ta da, say ns nt da na say ns n n da: Mmas usoro mkp r da b kar chara ch p ta ihe d iche d n' da na ibe ya tinyekwara etu ha si ab ak ta n na mmep ta okwu.

5.0 NCH K TA

Na nch k ta, akp makp na-ah maka mkp p ta da mana usoro mkp r da na-ah maka mp tara da n'as s kp m kw m. Am mam akp makp b am mam say ns n'ihi na na-agbaso usoro nch cha say ns . d d da as s na-ach p ta ihe d iche n' da d iche iche, ya na nsoro ha na-eso na mmep ta okwu.

6.0 IHE OMUME

1. G n d iche n' da na mkp r da as s ?
2. Ked ihe gosiri na am mam akp makp b say ns ?

7.0 NR T AKA/NG MI

Clark, John, Colin, Yallop & Janet Fletcher. (2007). *Introduction to phonetics and phonology (3rd edition)*. London: Blackwell.

Ikekeonwu, Clara I. (2000). *A workbook of general phonetics*. Nsukka: AP Express Publishers.

Ladefoged, Peter. (2006). *A course in phonetics (5th edition)*. Boston: Wadsworth Cengage Learning.

YUNIT 3 ALAKA AKP MAKP

ND NA

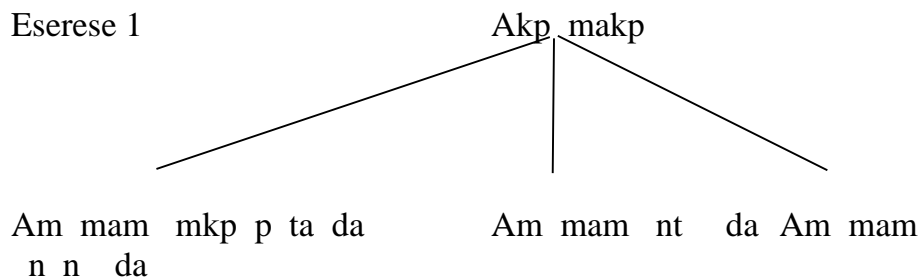
- 1.0 Mkp lite
- 2.0 Mbunuche
- 3.0 Nd na kp m kw m
 - 3.1 Am mam mkp p ta da
 - 3.2 Am mam nt da
 - 3.3 Am mam n n da
- 4.0 Mmechi
- 5.0 Nch k ta
- 6.0 Ihe Omume
- 7.0 Nr t aka/Ng mi

1.0 MKP LITE

da dab am mam na-enyocha, na-ak wap ta ma na-ahazikwa da okwu niile mmad nwere ike kp p ta. na-eme ka o doo anya etu e si emep ta da b la p tara na mkp r okwu nakwa ak k ah d iche iche e ji mep ta ya.

Mgbe mmad na-ekwu okwu, da d iche iche, nke si n'ihe na-ekwu ap ta, na-ad ka ihe enwegh mp tara na nt onye amagh as s a na-as . Mana onye ma as s ah ga-enwe ike isi n' da niile p tara na mkp r okwu niile mata echiche d n'ihe e kwuru. b ihe nd a ka r ji akp lite ngalaba at p takar chara ihe n' m m dal ha b mkp p ta da, nt da na n n da. Mana o nwekwara otu alaka akp makp z nke malitere n'af ole na ole gara aga. A na-akp ya forensik mana nke a d n'ime nt da n'ezie.

Eserese 1

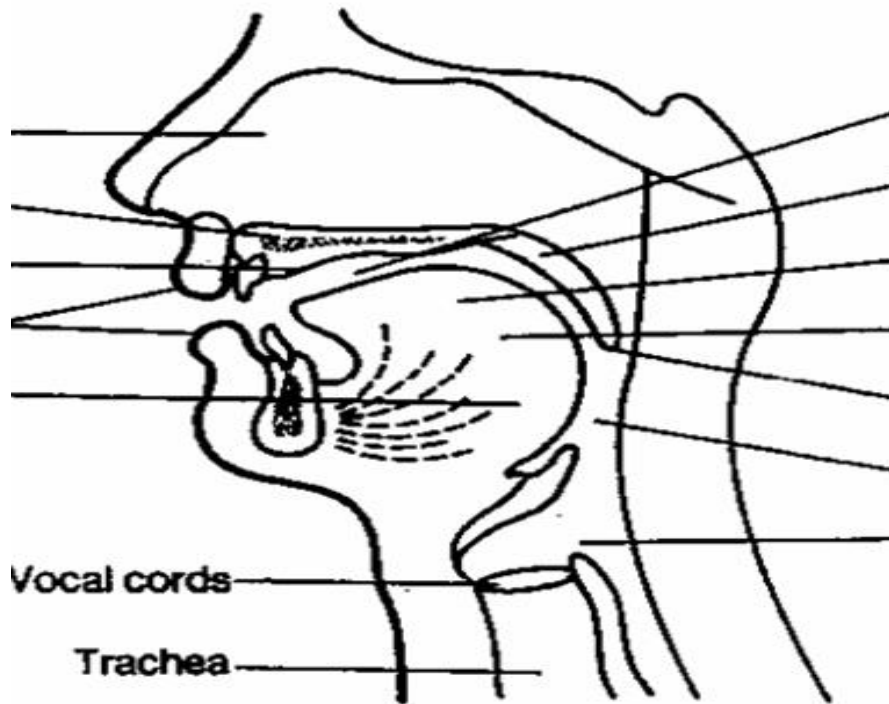


Ka a t lee alaka akp makp nd a n'otu n'otu.

2.0 MBUNUCHE

Na ngw cha yunit a, ga-enwe ike:

- dee r gan okwu na-ar n'ekwumekwu
- nye nd miche d na ngalaba akp makp ga
- k waa uru nt da bara



3.0 ND NA KP MKW M

3.1 Am mam mkp p ta da

Nke a b ngalaba na-ah maka ihe gbasara mmep ta da nakwa ak k ah nd niile e ji emep ta da. b ngalaba a na-ach p ta ebe mkp p ta, ngak gan okwu na waikuku na-enye aka mgbe a na-akp p ta mkp r da.

G n b gan okwu?

gan okwu, ngwaokwu ma b njimakp b ak k ah mmad d iche iche e ji akp p ta da. da anagh adap tara onwe ya. O nwekwagh da b la a na-an ma b r na mmad emeghar gh ak k ah ya b la. b naan mgbe ak k ah na ibe ya b ak tara ka a na-enwe mkp p ta da. b naan ak k ah na-eme ka akp p ta da ma b kwup ta okwu ka a ga-egosi n'esere a na-esote.

Eserese gan okwu

ebugbere n elu

1. ebugbere n ala
2. eze elu
3. eze ala
4. any r
5. az any r
6. akp ike
7. akp nro/ d akpo
8. yuvula
9. n ire
10. ak k ire
11. ihu ire
12. az ire
13. ukwu ire
14. nk l
15. ash na
16. ogwooro
17. mkp da
18. wa nri
19. ujiimi
20. uji n
21. eko akp r
22. opi akp r
23. ng
24. nche ng

E kere gan okwu ma b njimakp z ab . Ha b njimakp ike na njimakp j .

Njiakp ike: Ha b ak k ah nd na-emeghar mgbe a na-akp p ta da. Ha d n'agba ala; ha g nyere, ebugbere n ala, eze ala, n ire, ah ire, ihu ire, az ire, ukwu ire

O nwere otu njiakp ike d n'agbaelu, ebe e nwere njiakp nd b njiakp j . Aha njiakp ike d n'agbaelu b d akpo. d akpo na-emeghar emeghar .

Njiakp j : D ka aha ha siri d , nd a b njiakp nd anagh emeghar emeghar . Njiakp nd ah d n'agbaelu ma e wep d akpoka a na-akp njiakp j . Njiakp nd a d otu ebe. Mgbe a na-akp p ta da, njiakp j na-an r njiakp ike agaa met ha tupu a akp p ta da. Njiakp j b : ebugbere n elu, eze elu, any r , az any r , akp ike na nk l

NNWALE ONWE

- i. G n b gan okwu?
- ii. Ked aha z a na-akp gan okwu?
- iii. ch. K waa nd miche d nanjiakp ike na njiakp j .

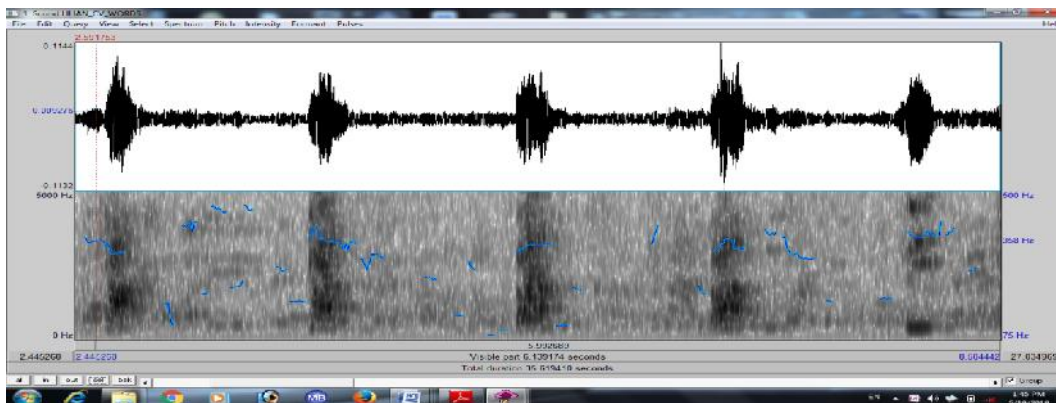
3.2 AM MAM NT DA

Ngalaba nke a met tara ch p ta d d da d mgbe a kp p tara ya t mad mgbe o si n' n okwuuna-aga na nt n ; ya b , na-at da. Mgbe mmad kp p tara da, da ah ga-esi n' n okwu banye n'ikuku ma sitekwa n'ikuku banye na nt n . A na-akp kwa ngalaba a d d da.

E kere say ns nt da z ab . Ha b nkengwa nannyocha. A b a na say ns d d ngwa, e nwere ngwa d iche iche na-enye aka na nt cha da okwu, d.k. igwe mp k , igwe okwu, igwe nkwunye da okwu, dg. Ihe d ka af 30 gara aga, tupu igwe mp k mkpanaka ap ta, nd ka akp makp na-eji igwe buruibu na-any ar eme nch cha da. Mana ugbu a, e nweela ak r igwe mp k na-enye aka n'ime d nch cha a. Ugbu a, e nwere ike kpa igwe mp k n'aka na-agaghar . b gh z iwu na a ga-an na laab as s mee nch cha. t t ak r igwe mp k na nd ch p tara ha g nyere:

- Ngwumikuku (Wavesurfer) – The Royal Institute of Technology, Stockholm
- Praat – Paul Boersma na David Weenink
- EMU suite – Cassidy na Harrington
- Nt cha okwu (Speech analyzer) – Summer Institute of Linguistics

Eserese na-esote b ihe ngosi d d ebili okwu e sitere n'igwe mp k nwete



Usoro say ns nt da, nkennyocha, b say ns n'ezie.(Maka matakwu maka akp makp nke ngwa n'uju, h Fry (1979), Nkamigbo (2011)).

NNWALE ONWE

- i. Ked alaka akp makp na-ah maka etu da a kp p tarala si aga n'ikuku?
- ii. Olee nd ch p tara *Praat*?

3.3 Say ns n n da

Nke a b alaka akp makp na-eleba anya n' da a n r , na ngh ta daah nwere. na-ach p ta etu nt si an ta daokwu a kp p tara. na-eme nke a site n'inyocha etu da si esi nant agafeudu na akwara nt ruo n' b r . A nagh emekar nch cha na ngalaba a n'ihhi nh a-ah so ya; g nyere inye nt na b r tupu e nweta ihe a na-ach ; e mee nke a, na-emet ta ah -ike onye e ji eme nch cha.

NNWALE ONWE

- i. K waa ihe say ns n n da b .
- ii. G n mere na a nagh emekar nch cha na ngalaba n n da?

3.4 D D DAF R NSIK

Nke a ngalaba nt da, ebe a na-etinye amamihe e nwetara site n' m m akp makp n' r na n d iwu. f d r nt da f r nsik b :

a. Nr gosi okwuu, ebe nd ka akp makp na-agba aka-ebe na b onye nke a ma b onye nke z nwe olu e tinyere n'igwe ntinye okwu.

b. Ndep taghar , ebe nd ka akp makp na-edep ta ekwumekwu d n'ime igwe nd r okwu, nke na-ah a ah ngh ta (o nwere ike b r na mkp t d na gburugburu ebe a n tinye ekwumekwu ah), ma b ha ak wap ta ma ndep taghar e mere ad nt kwas obi.

ch. Na nk wa ekwumekwu ziriezi, nd ka akp makp na-enyocha ekwumekwu e tinyere n'igwe nd r okwu iji ch p ta ma b nke ziri ezi ma b nke ad gboloja.

d. Nr gosi as s izugbe ma b olund , ebe a ka nd ka na-agba osi-ar nye obodo ma b mpaghara okwuu si.

NNWALE ONWE

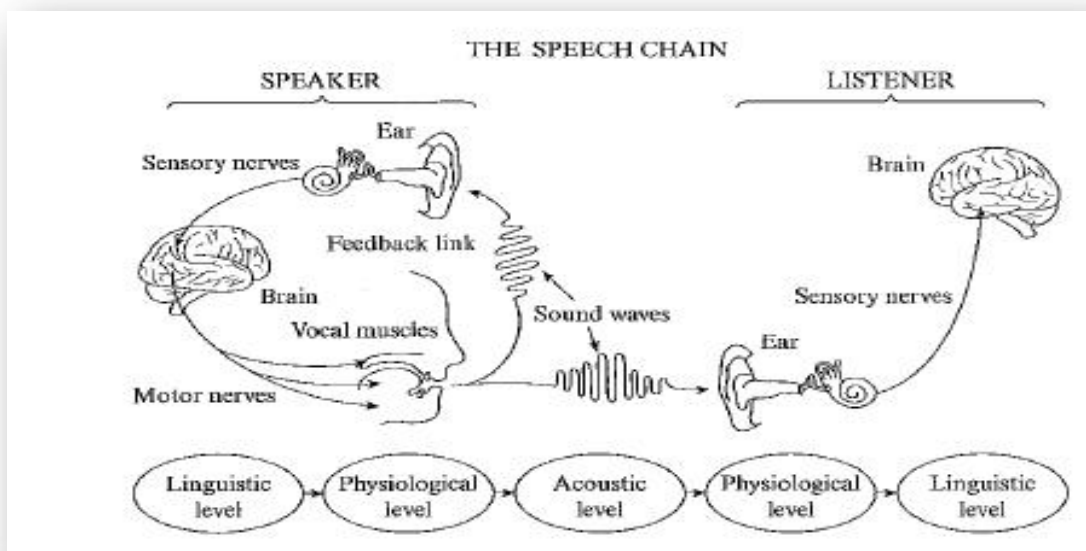
- i. G n ka akp makp nt da f r nsik b ?
- ii. Ked z r ab akp makp f r nsik na-ar ?

4.0 MMECHI

Akp makp na-eleba anya n'ekwumekwu kp m kw m. O nwere alaka at p takar chara ihe kemgbe am mam a malitere. Ha b mkp p ta da, nt da na n n da. Mana o nwekwara otu alaka a ch p tara n'af ole na ole gara aga a na-akp f r nsik. Mkp p ta da na-ah maka ak k ah na usoro d iche iche e ji akp p ta da, nk wa na d d ya; nt da na-enyocha ihe na-eme n' da mgbe o si n' n p ta ma n r n'ikuku; n n da b alaka h ara ah ,nke na-eleba anya n'etu da si esi na nt aga n' b r ma nweengh ta; nt da f r nsik na-etinye amamihe e nwetara site n' m m akp makp n' r iwu.

5.0 NCH K TA

Eserese d n'imeDenes na Pinson (1993:5) ch k tara mmet ta d n'etiti mkp p ta da, nt da na n n da.



Lee eserese ah :

6.0 IHE OMUME

1. Alaka ole ka akp makp nwere?
2. Dep ta d d njiakp ike at .
3. ch. Dee njiakp j an .
4. Ked alaka akp makp a na-etinye n' r iwu ?

7.0 NR T AKA/NG MI

Clark, John, Colin, Yallop & Janet Fletcher. (2007). *Introduction to phonetics and phonology (3rd edition)*. London: Blackwell.

Crystal, David. (2008). *A dictionary of linguistics and phonetics (6th edition)*. London: Blackwell.

Denes, P. B. & P. N. Pinson. (1993). *The speech chain: The physics and biology of spoken language (2nd edition)*. New York: W.H. Freeman and Company.

Fry, Dennis B. (1997). *The physics of speech*. Cambridge: Cambridge University Press.

Nkamigbo, Linda. (2011). *A workbook of acoustic phonetics*. Nkpor: Brystevand Publishers.

YUNIT 4 NK WA USORO MKP R DA NA MKP R DA AS S

ND NA

- 1.0 Mkp lite
- 2.0 Mbunuche
- 3.0 Nd na kp m kw m
 - 3.1 Mkp r da as s
 - 3.2 Mkp iche
 - 3.3 Mkp iche n'as s daolu
 - 3.4 Nn na mmeju
 - 3.5 Nn na abar
- 4.0 Mmechi
- 5.0 Nch k ta
- 6.0 Ihe Omume
- 7.0 Nr t aka/Ng mi

1.0 MKP LITE

d d da as s b alaka say ns as s na-am maka da okwu. Nd ka as s enyela t t nk was banyere usoro mkp r da. Hyman (1975) na Clark, Yallop na Fletcher (2007) na Crystal (2008) k wara na usoro mkp r da b am mam met tara ch p ta d usoro as s d iche iche nwere. Katamba (1989), na Ezeuko na Chira (2005) h tara usoro mkp r dad ka ngalaba say ns as s na-enyocha z d iche iche e si edok da ha ewee gh mkp r na ah r okwu. Nk wa nd a nyere gosiri na am mam a b ebe a na-etinye m m akp makp n' r n'ih na b n'usoro mkp r da ka a na-amata as s nd nwere da okwu na ngweolu d iche iche akp makp k wap tara. na-eleba anya nand miche d n'etiti t t mkp r danwere mkp r edemedede yiri onwe ha, da na-agak n , na etu ha si ab ak ta mep ta mkp r okwu. d d da as s b kwa aha a na-akp amamihe s as s nwere gbasara nsoro da as s ya.

Ihe d kar chara mkpa n'am mam a b mkp r da as s . Mkp r da as s b da d kar chara ntak r , nke nwere ike iweta nd miche na ngh ta okwu ab ma b kar a yitewere onwe ha.

2.0 MBUNUCHE

Na ngw cha yunit a, ga-enwe ike:

- k waa ihe mkp r da as s b
- mata ihe mkp iche b

- k waaihe mere mkp iche n'as s da olu jiri p iche
- k waa ihe nn nammeju b
- dep ta ihe banyere nn na abar .

3.0 ND NA KP M KW M

3.1 Mkp r da as s

D ka e derela na mb , mkp r da b da pekar chara mpe, nke na-eweta nd miche na ngh ta okwu d iche iche ha batara na ha. As s niile mmad na-as nwere mkp r da, nd e ji ak wap ta ha. E kwuo na mkp r da as s b da pekar chara mpe, ihe p tara b na e nweghi ike ikewada ya z . Iji maa at , n'as s Igbo, e nweghi ike ikewada mkp r da as s /p/. Mana n'akp makp mkp r da as s a, /p/ nwere m da d ka

[p^h] mkp nume

[p^j] mkp nakp

[p^w] mkp negbugbere n

da nd a e dep tara n'elu b m da. Ha anagh eweta mgbanwe na ngh ta okwu. Mana haweta mgbanwe na ngh ta okwu, ha ab r mkp r da.

Ka a t lee dar any r [r]. [r] nwere d d ab . Ha b dar any r [r]na nke mkp nimi [r]. Nkamigbo (2014) kwenyere na ndenye mkp r da ab nd a agagh eweta mgbanwe na ngh ta okwu Igboizugbe n'ih na ha b m da /r/. Ka o silad , ha b mkp r da as s n'olund f d n'as s Igbo. ma at , n'olu m ah a /r/ na /r/ na-eweta mgbanwe na ngh ta. Lee m ma at nd a na-esote:

/ara/ 'isi ad gh mma'

/ara/ 'ak k ah mmad '

/ra/ 'iji ire rie ihe'

/ra/ 'akwamiko nwoke na nwaany '

A na-as na da okwu na-ar r mgbe b la o wetara mgbanwe na ngh ta mkp r okwu. Mgbe ah , b da nwere onwe ya. b da nn r onwe, nke nwere ike gbanwe ngh ta mkp r okwu, ka a na-akp mkp r da.

Robert Chapman kwup tara na b na senturi 19 ka a ch p tara mkp r da as s ma kwalite ya na senturi nke 20. k waramkp r

da as s d ka ótù da okwu ma b òtú da na-ar r ka ótù, nke nwere ike iweta nd miche na ngh ta. O ji okwu Bekee nd a maa at :

share / /

hair /h / care /k /

da / /, /h/ na /k/ b mkp r da as s n'ihì na ndenye ha n'okwu nd a wetara mgbanwe na n'echiche ha. E nwere ike kp k da ab ma b kar a d ka otu da. ma at , dach kez any r / /na / /, na daike ndakpu keegbugbere n ab /kp/ na /gb/. Ebe b namkp r da as s na-eweta mgbanwe na ngh ta, d mkpa na e lebara anya na ya. Ebe na-ap takar ihe n'am mam usoro mkp r da b na mkp iche.

NNWALE ONWE

- i. Kedumkp r da as s nwe m da nd a: [p^h] [p^j] [p^w]?
- ii. Olee n'olund /r/ na /r/ na-eweta mgbanwe echiche?
- iii. ch. Nye m ma at da ab b ak r n b r otu da

3.2 Mkp iche

D ka aha ya siri d , mkp iche b okwu gbara ab yiri onwe ma nwe echiche d iche. Ezeuko na Chira (2005) k wara mkp iche d kangwa m m na-enye aka k wap tamkp r da as s ka da nwere ike igosip ta nd miche ma b echiche d iche n'okwuha batara. Mkp iche b okwu ab yiri onwe ha belu s s n'otu mkp r da as s . Ndenyemkp r dand a n'okwu ab ma b kar a na-eweta echiche d iche.

ma at :

Na mbidomkp r okwu

ígwè /ígwè/

ógwè /ógwè/

e tu /e tu /

o tu /o tu /

a ma /a ma /

ma / ma /

N'etiti mkp r okwu

íjè /í è/

ídè /ídè/

kw / kw /
 s / s /
 o gbe /o gbe /
 o gwe /o gwe /

Na ngw cha mkp r okwu

ísì /ísì/
 ísè /ísè/

da / da /
 d / d /

n ka /n ka /
 n k /n k /

N'at nd a, b mkp r edemedede wetara ad miche na ha; da olu ha b otu. E nwere ebe nd miche na-esite n' da olu, d.k.

ákwà /ák^wà/
 àkwà /àk^wà/

édí /édi /
 édi /édi/

i gwe /i gwe /
 i gw /i gw /

N' m ma at nd a, mkp r edide ha b otu mana da olu ha ab gh otu. b da olu wetara nd miche n'echiche ha. Nke a p tara na ihe e ji at mkp iche d ab n'Igbo; ha b mkp r okwu na da olu. b gh naan na mkp r da as s ma b da olu gbanwere kama ha ab ga-an n'otu ebe. b n d d etu a mere eji akp d okwu d etu a 'mkp iche'. b r namkp r okwu kar a ab , ha ab r otu iche d ka:

a k /a k /

a ka /a ka /

a k /a k /

g / g /

t / t /

s / s /

o ge /o ge /

o ke /o ke /

o se /o se /

Mkp r da as s nd a na-egosip ta mkp iche n'okwu nwere ike malite okwu, n n'etiti okwu ma b ijedebe okwu.

NNWALE ONWE

- i. Olee ihe gh tara mkp iche b ?
- ii. Nye m ma at okwu at at nwere mkp iche mkp r edide na mkp iche da olu.

3.3 Mkp iche n'as s da olu

da olu b ngweolu, na-eweta mgbanwe olu na nkeji okwu. Mgbe mgbanweolu webatara mgbanwe na ngh ta mkp r okwu na ibe ya n'as s , as s ah b as s da olu. t t as s Afr ka na Eshia b as s da olu. Igbo so n'as s Afr ka b as s da olu (Ikeke nw , Ezikeojiak , ban , na Ug j , 1999).

A b a n'as s da olund ka Igbo, dabachagh s na mkp iche b mkp r okwu ab yiri onwe ha belu s n'otu mkp r da as s . A na-at lekwa nd miche da olu na-eweta. Igbo nwere akara da olu at . Ha b da olu elu, ala na ns da.

d mkpa ka a mata na da olu elu na nke ala na-ap ta ihe n' n d okwu at mmalite, etiti na njedebe okwu. Etu o sila d , daolu ns da anagh ap ta ihe na mmalite okwu kw r onwe ya. ga-esoriri daelu. da olu ns da anagh eso da olu ala n'okwu Igbo. Imebe mkp iche n'okwu Igbo, da olumkp r okwu ab nd ah ga-eyi, ma at :

Mmalite okwu

m	/ m /
ám	/ám /
ákwà	/ák ^w à/

Etiti okwu

àkà	/àkà/
òkè	/òkè/
ír	/ır /
íb	/íb /

Njedebe okwu

gb	/ígb /
gb	/ígb /
òkè	/òkè/
mkp	/ kpì/
mkpà	/ kpà/

E lee anya na mkp r okwund e ji maa at n'elu, a ga-ach p ta na da nd d iche b mkp r da as s n'ihi na ha webatara mgbanwe n'echiche mkp ma b otu okwu ha d na ya. Ha niile b cha da nn r onwe. N'aka nke z , da olu na-ewetakwa mgbanwe n'echichemkp r okwu nd yiri onwe ha. m ma at :

ákwá	àkwá
ìgwè	ígwè
òké	óké
ìsì	ísì
àkwà	àkwá
ígwé	ígwè
ókè	óké
ísí	ís

d mkpa mata na mkp r okwu nd a ab gh mkp iche:

àkwà ákwá

ìsì ísí

òkè óké

Ihe d iche n'etiti ha ad gh naan otu. Na mkp iche nke izizi, ihe d iche n' da olu ha d ab .

Njirimara mkp iche

E nwere z ihe ole na ole e jiama mkp iche. Ihe nd a d ka Ezeuko na Chira (2005:59)si dep ta b :

- a. Mkp r da as s d n'okwu mkp iche ab ah ga-aha nhatanha.
- b. ga-ab r r naan n'otu ebe namkp r okwu ka ha ga-ad iche.
- c. Okwu ab ah agagh enye enwe otu echiche.
- d. Nd miche na ns pe ha ga-ebute nd iche na ngh ta ha.

NNWALE ONWE

a. Mep ta mkp iche n'Igbo site n' gbanwe mkp r da as s nke mb n'okwu nd a:

- i. mma
- ii. ng
- iii. ka
- iv. g
- v. at
- vi. obi

b. K waa ihe mere Igbojiri b r as s da olu.

3.4 Nn na mmeju

Nn na mmeju b nsoro nn na ebe nd òtù ótùmkp r da as s anagh an n'ótù n d usoro mkp r da. Mbah na Mbah (2010) dere na b r na otu n r n'otu ebe, o gbochiela nwanne ya n kwa n'ebe ah . Etu n d ha siri d b na o nweghi da ga-ahap n d ya were n d da z . Mgbe ihe di etu a mere, a na-as na daokwu n na nn nammeju. Nd òtù mkp r da as s n na mmeju ka a na-akp m da. Otu n'ime ha b nwa da.

Ihe z d mkpa k wa ebe a b na da nd nabatara mkp nimi, mkp nume, mkp nakpo na mkp negbugbere n b nwa da n'ebe ogbo ha nd anabatagh ihe nd a. Lee anya n'okpuru:

[r] (mkp nimi)	b nwa da /r/	ar na ar
[t ^h] (mkp nume)	b nwa da /t/	at ^h na at
[j] (mkp nakpo)	b nwa da / /	ah ^j a na aha
[w] (mkp negbugbere n)	b nwa da / /	^w oo na loo

NNWALE ONWE

- a. K waa ihe nn nammeju b .
- b. Were otu mkp r okwuotu mkp r okwu nye m ma at nd a :
 - i. mkp nimi
 - ii. mkp nume
 - iii. mkp nakpo
 - iv. mkp negbugbere n

3.5 Nn na abar

Nn na abar b d d nsoro mkp r da, ebe mkp r daab kw r onwe ha d n'otu n d mana ha anagh eweta nd miche n'echiche okwu nd ah . Nke a p tara na mkp r daab ah ma b kar a anagh agbanwe ngh ta mkp r okwu ha d n'ime ha; etu o sola d , a na-enwe nd miche na mkp p ta da ha.

m ma at :

a as /a asi/

s /is /

sh /ɪʃʊ/

ka / ka/

aka /aka/

anyara/a ara/

a ara /a ara/

as /asi/

ash /afi/

E defeghar r mkp r da as s nd a na mkp r okwu nd a gas mana i lee anya h na o nwegh mgbanwe d na ngh ta mkp r okwu nd a. N' n d d etu a, mkp r da as s nd a b nn nabar .

NNWALE ONWE

- i. Ked ihe nn nabar p tara?
- ii. Nye m ma at mkp r okwu an ebe nn nabar p tara ihe.

4.0 MMECHI

Na Yunit a, any m r maka mkp r das s , mkp iche na mkp iche n'as s da olu. Mkp r da as s b da pekar chara mpe nke na-egosip ta nd miche na ngh ta mkp r okwu d iche iche ha batara. O nwegh as s enwegh mkp r da as s . As s niile mmad na-as nwere mkp r da as s e ji ak wap ta ha.

G n b mkp iche? Mkp iche b okwu ab yiri onwe ha beere s n'otu mkp r da as s nke ndefeghar ha ga-eweta ngh ta d iche. Mkp iche n'as s da olu d iche n'ihe b n'as s nd z . A b a n'as s da olud ka Igbo, dabachagh s na mkp iche b mkp r okwu ab yiri onwe ha beere s n'otu mkp r da as s . A na-at lekwa nd miche da olu na-eweta. Tupu a s na mkp r okwu ab nwere mkp iche, a ga-ebu z tulee da olu ha.

Nsoro nn na ebe ebe nd òtù ótù mkp r da as s anagh an n'ótù n d usoro mkp r da ka a na-akp nn nammeju. b r na otu mkp r da as s n r n'otu ebe o gbochiela nwanne ya n kwa n'ebe ah . Etu n d ha siri d b na o nwegh da ga-ahap n d ya gaa were n d z . b r na e defeghar amkp r da as s ab n'otu n d na mkp r okwuma o nwegh mgbanwe batara na ngh ta mkp r okwuah , mara namkp r da as s nd ah b nn nabar .

5.0 NCH K TA

Mkp r da as s b da pekar chara mpe ma nwee ngh ta. Mkp r da as s b isi a h r kwaba okpu na mkp iche. d n d at mkp r da as s nd na-egosip ta mkp iche n'okwu nwere ike n . Ha b : mmalite okwu, etiti okwu ma b njedebe okwu. da olu na-ar nnukwu r n' ch p ta mkp iche n'as s da olu.

6.0 IHE OMUME

1. G n b mkp r da as s ?
2. Ked njirimara mkp iche at ma?
3. ch. Olee ihe i chere mere e jiri kwuo na da olu d oke mkpa n' ch p ta mkp iche n'as s da olu?
4. Dep ta mkp iche ise gbadoro kw n' da olu.
5. G n b nn nammeju?

7.0 NR T AKA/NG MI

Ezeuko, R.O. & A. E. Chira. (2005). *Fonetiiks na fon loj Igbo*. Awka: Kristophel Publishers.

Hyman, Larry. (1975). *Phonology: theory and analysis*. New York: Holt, Rinehart & Winston.

Ikeke nw , Clara, Ezikeojiak , P.A., ban , An sike & Ug j , Jumbo. (1999). *F n l j na grama Igbo*. Ibadan: University Press PLC.

Katamba, Francis. (1989). *An introduction to phonology*. England: Longman.

Mbah, B.M.& E.E. Mbah. (2010). *Topics in phonetics and phonology: Contributions from Igbo*. Nsukka: AP Express Publishers.

Nkamigbo, Linda C. (2014). Nasalization, aspiration and labialization in Igbo dialect phonology. *SKASE Journal of Theoretical Linguistics, Slovakia*. 11 (2): 59-67. In <http://www.skase.sk/journals.html>

YUNIT 5 MMEK R TA D NA MKP R EDEMEDE NA MKP R DA AS S

ND NA

- 1.0 Mkp lite
- 2.0 Mbunuche
- 3.0 Nd na kp m kw m
 - 3.1 Mkp r edemede Igbo
 - 3.2 Mkp r edemede Igbo na mkp r da as s ogbo ya
- 4.0 Mmechi
- 5.0 Nch k ta
- 6.0 Ihe Omume
- 7.0 Nr t aka/Ng mi

1.0 MKP LITE

Mgbe b la a na-am ihe gbasara usoro mkp r da n'as s bula, Ikeke nw , Ezikeojiak , ban na Ug j (1999) k wap tara na d mkpa ileba anya na mmek r ta d n'etitimpk r edemede na mkp r da as s . As s b la nwere usoro e ji edep ta ya ma nwekwa mkp r dae ji akp p ta ya. Mkp r edemede na mkp r da as s ab gh otu ihe. b mkp r edemede ka e ji edetu mkp r okwu ma were mkp r da as s na-akp p ta okwu.

N'as s Igbo, mkp r edemede e nwere e ji edetu as s Igbo ka a na-akp ab ch mana e ji akara akp makp edetu mkp r da as s . As s b la na-ewep ta ab ch e ji ede ya mana b otu mba wa na-am maka mkp r da as s na-ekpebi d d na usoro akara akp makp . Otu a b 'International Phonetic Association' na Bekee ma b IPA n' chaf (Ikeke nw na nd z , 1999).

N' t t as s , mkp r edemede na mkp r da as s anagh eyitecha n'etu e si edetu ha. t t oge, mkp r da as s na-eyimpk r edemede. Nke a p tara ihe na Bekee. Bekee nwere mkp r edemede iri ab na isii ma nweempk r da as s iri an na an . N'aka nke z , e nwere as s nd mkp r edemede ha na mkp r da as s ha ha n' n g .

2.0 MBUNUCHE

Na ngw cha yunit a, ga-enwe ike:

- mata myiri na ihe d iche namkp r edemede na mkp r da as s

- k waa mkp r edemede ole d n'Igbo
- kp p tamkp r da as s ole d n'Igbo

3.0 ND NA KP M KW M

3.1 Mkp r edemede Igbo

Mkp r edemede Igbo izugbe d iri at na isii ebe mkp r da as s Igbo izugbe d kwa iri at na isii. Otu mkp r da as s na-an chi anya naan otu mkp r edemede (Nkamigbo, 2010). Nke a mere a ga-eji kwuo na ezi mmek r ta d n'et t mkp r edemede na mkp r da as s Igbo izugbe. Etu o sila d , Igbo izugbe ezuchagh oke n' k wa mkp r da as s Igbo niile.

Lee ab ch Igbo izugbe

a	b	ch	d	e	f	g	gb	gh	gw
h	i								
	j	k	kp	kw	l	m	n		nw
ny	o								
	p	r	s	sh	t	u		v	w
y	z								

Ab ch Igbo nwere otu d iche iche. Nke mb , e kere ab ch Igbo z ab . Ha b :

- Mgbochiume
- daume

Mgbochiume Igbo d iri ab na asat ebe daume d asat . E kewakwa mgbochiume z ab . z mgbochiume ab b :

- Mgbochiume nge
- Mgbochiume mkp

Mgbochiume nge b mgbochiume nd d naan otu ebe mgbochiume mkp b mgbochiumend mgbochiume nge ab mejup tara. N'agbanyeghi na mgbochiume mkp nwere mgbochiume nge ab , a naewe ha ka otu mkp r da as s . Mgbochiume nge d iri na itoolu ebe mgbochiume mkp d itoolu. Lee mgbochiume nge.

b	d	f	g	h	j	k	l
m	n		p	r	s	t	v
w	y	z					

Nd a b mgbochiume mkp :

ch gb gh gw kp kw nw ny
sh

E kekwar a daume Igbo z ab . z ab e kere daume Igbo b :

- a. daar
- b. damfe

daar b e, i, o, u mana udamfe b a, , , . Ikeke nw na nd z (1999) anabatagh aha nd a b daar na damfe. Ha kwuru na d r aha nd a abagh uru maka ha anagh egosi kp m kw m nd miche d na nkeji daume ab nd a.

Ha kwuru na mgbe a na-akp p ta daume e, i, o, u, ntachi anagh ad na nk l ma mgbe a na-akp p ta daume a, , , , a na-enwe ntachi na nk l . b nd ghachi az ukwu ire na-eme ka ntachi d na nk l mgbe a na-ak p ta daume nd otu nke ab . A nagh enwe nd ghachi az ukwu ire na mkp p ta daume nd otu nke mb .

NNWALE ONWE

- i. Dep ta mgbochiume d n'Igbo izugbe?
- ii. Mgbochiume nge ole ka Igbo izugbe nwere?
- iii. ch. Ch p ta mkp r da as s Igbo at na-ap tagh n'edemede n'Igbo izugbe.

3.2 Mkp r edemede Igbona mkp r da as s ogbo ya

A na-edep tamkp r edemedeka ha na-ad n'ederede Igbo ma na-edenyemkp r da as s n'ime akara ehuru // . Lee mkp r edemede na mkp r da as s ha na-an chi.

Mkp r edemede	Mkp r da as s
a	/a/
b	/b/
ch	//
d	/d/
e	/e/
f	/f/
n	/n/
	//
nw	/w/

ny	/ /
o	/o/
	/ /
g	/g/
gb	/gb/
gh	/ /
gw	/gw/
h	/ /
i	/i/
	/I/
j	/ /
k	/k/
kp	/kp/
kw	/k ^w /
l	//
m	/m/
p	/p/
r	/r/
s	/s/
sh	/ /
t	/t/
u	/u/
	/ /
v	/v/
w	/w/
y	/j/
z	/z/

A nagh eji okpotokpo leta edep ta mkp r da as s .

NNWALE ONWE

Dee mkp r da as s na-an chi anya mkp r edemede nd a:

- i. ch
- ii. gh
- iii. y
- iv. j

4.0 MMECHI

E ji mkp r edemede edetu mkp r okwu ma were mkp r da as s akp p ta okwu. Mkp r edemede e ji edetu as s Igbo ka a na-akp ab ch Igbo ma were akara ehuruedetu mkp r da as s . Ezi mmek r ta d n'etiti mkp r edemede na mkp r da as s Igbo izugbe n'ih i na otu mkp r da as s na-an chi anya otu mkp r edemede. O nweghi nke ka ibe ya.

5.0 NCH K TA

n g mkp r edemede na mkp r da as s Igbo izugbe b otu. E nwere mkp r edemede iri at na isii na mkp r da as s iri at na isii n'Igbo. Otu mkp r da as s na-an chi anya otu mkp r edemede n'Igbo. Mgbochiume Igbo izugbe d iri ab na asat ebe daume d asat .

6.0 IHE OMUME

1. Dee maka mmek r ta d n'etiti mkp r edemede na mkp r da as s Igbo izugbe.
 - a. Kowaa ihe d iche n'etiti
 - b. mgbochiume na daume
 - c. daar na damfe

7.0 NR T AKA/NG MI

Ikeke nw , Clara, Ezikeojiak ,P.A. ban , An sike & Ug j , Jumbo. (1999). *F n l j na grama Igbo*. Ibadan: University Press PLC.

Nkamigbo, Linda C. (2010). *Kwuo ya n'Igbo*. Nkpor: Brystevand Publishers.

MODUL 2 NK CHA, D D NA NN NA EBE MKP R DAAS S

Na modul 1, m r maka z e si akp p ta mkp r daas s na alaka ya ga, h usoro mkp r da na mkp r daas s nakwa mmek r ta d na mkp r edemedede na mkp r da as s . Na modul a, ga-am z maka mkp r daas s n'uju. Nke a p tara na ga-ag banyere daume na mgbochiume, ihe ha b , d d ha ga nakwa n d ha na-an na mkp r okwu. daume b mkp r da as s nd ah a na-akp p ta site na nkup ta ume na-aga werewere n'enweghi mmet ta otu njiakp na ibe ya. Nke a b otu ihe d iche n'etiti daume na mgbochiume.

Mgbochiume b mkp r da as s nd a na-enwe mgbochi ikuku na mkp p ta ha site na mmet k njiakp na ibe ya. Igbo izugbe nwere daume asat ma nwee mgbochiume iri ab na asat . daume Igbo enweghi mgbochi b la gbasara n d ha na-an na mkp r okwu. Nke a p tara na e nwere ike h daume n'ebe b la na mkp r okwu. Mana mgbochiume anagh ejedebe okwu Igbo. daume na mgbochiume na-emejup ta nkejiokwu. Nkejiokwu b ikeri mkp r okwud ka mkp p ta da na etu ekumume ha siri d .

Nd na-esote b nkegas d na modul 2

Yunit 1	Nk cha daume
Yunit 2	d d na nn na ebe daume
Yunit 3	Nt cha mgbochiume
Yunit 4	d d na nn na ebe mgbochiume
Yunit 5	Nkejiokwu

YUNIT 1 NK CHA DAUME

ND NA

- 1.0 Mkp lite
- 2.0 Mbunuche
- 3.0 Nd na kp m kw m
 - 3.1 Nk cha daume
- 4.0 Mmechi
- 5.0 Nch k ta
- 6.0 Ihe Omume
- 7.0 Nr t aka/Ng mi

1.0 MKP LITE

As s b la nwere da okwu mebere ya. Igbo nwekwara da okwu nd nke ya. b daokwu ka e ji as as s ma na-akpar ta ka. da okwu na- ap ta ihe na mkp r edemede na mkp r da as s . E kere da as s z ab . Ha b daume na mgbochiume. Mgbochiume b mkp r da as s nd ah na-enwe mgbochi ikuku na mkp p ta ha site na mmet ta njiakp na ibe ya mana a nagh enwe mgbochi ikuku na mkp p ta daume n’ihi na o nweghinjiakp ya na ibe ya na-emet ta. Na modul a, a ga-enyocha nk wa, d d na nn na ebe mkp r da as s d n’Igbo.

2.0 MBUNUCHE

Na ngw cha yunit a, ga-enwe ike:

- kp p ta daume
- see chaat daume Igboizugbe
- nye m ma at daume

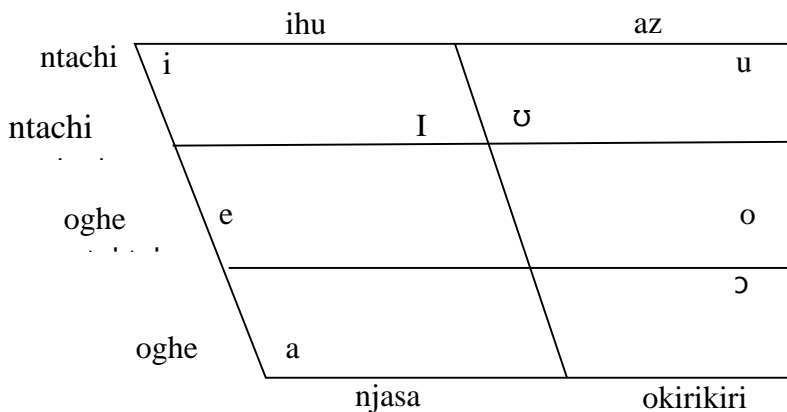
3.0 ND NA KP M KW M

3.1 Nt cha daume

daume b mkp r da as s nd ah a na-akp p ta site na nkup ta ume na-aga werewere n’enweghi mmet ta otu njiakp na ibe ya. Nke a b otu ihe d iche n’etiti daume na mgbochiume . Igbo izugbe nwere daume asat . Ha b :/a e i i o u /.

Chaat daume Igboizugbe

Chaat daume na-egosip ta etu e si akp p ta daume Igbo.



Mkp p ta daume na mmalite mkp r okwu

/i/ daume ntachi ihu njasa:

ibi /ibi/ imi /imi/

isi /isi/ iti /iti/

/I/ daume ntachi etiti ihu njasa:

ga / ga/

k / k /

b / b /

ma / ma/

/u/ daume ntachi az okirikiri:

udu /udu/

uko /uko/

uze /uze/

ubu /ubu/

/U/ daume ntachi etiti az okirikiri:

d /ʊdɔ/

kwa /ʊk^wa/

b /ʊbɔ/

g /ʊgʊ/

/e/ daume oghe etiti ihu njasa:

egwu /eg^wu/

eke /eke/

enyi /eɲi/

ego /ego/

/o/ daume oghe etiti az okirikiri:

obe /obe/

odo /odo/

oku /oku/

opi /opi/

/ɔ/ daume oghe az okirikiri:

z /ɔzɔ/

g /ɔgɔ/

ka /ɔka/

gw /ɔgwɔ/

/a/ daume oghe ihu njasa

aga /aga/

anya /aɲa/

akwa /akwa/

aja /adʒa/

NNWALE ONWE

a. K waa daume nd a ma nye m ma at ha ab ab na mkp r okwu

i. /ɔ/

ii. /u/

iii. /e/

iv. /a/

b. K waa nd miche d n'etiti daume nd a:/i/ na /ɪ/.

4.0 MMECHI

Mkp p ta daume asat d n'Igboizugbe b nd a: ntachi ihu njasa, ntachi etiti ihu njasa, ntachi az okirikiri, ntachi etiti az okirikiri, oghe etiti ihu njasa, oghe etiti az okirikiri, oghe az okirikiri, na oghe ihu njasa.

5.0 NCH K TA

daume asat nd ah e nwere n'Igbo nwere n d mkp p ta asat d ka a k warala na mmechi.

6.0 IHE OMUME

1. Kedu daume nd nwe n d mkp p ta nd a:
 - a. oghe etiti az okirikiri?
 - b. ntachi az okirikiri?
2. ch. ntachi etiti az okirikiri?

7.0 NR T AKA/NG MI

walaka, MaryAngela. (1996). *Fon l j na nt as s Igbo*. Ibadan: Kraft Books.

YUNIT 2 D D NA NN NA EBE DAUME

ND NA

- 1.0 Mkp lite
- 2.0 Mbunuche
- 3.0 Nd na kp m kw m
 - 3.1 Ihe at d mkpa na nk wa da-ume
 - 3.2 Nn na ebe daume
- 4.0 Mmechi
- 5.0 Nch k ta
- 6.0 Ihe Omume
- 7.0 Nr t aka/Ng mi

1.0 MKP LITE

Chaat daume e gosiri na yunit nke mb ,na nkeji a, na-ak wa na n'ime daume asat e nwere n'Igbo, e nwere d d daume nd a:

daumeihu na daume az

daumeelu na daumeala

daume oghe na daume okirikiri

2.0 MBUNUCHE

Na ngw cha yunit a, ga-enwe ike:

- mata z ihe at d mkpa banyere mkp p ta da-ume
- k waa z ihe at nd ah nke ma
- detu m ma at daume mgbe ha n na mmalite, etiti nakwa njedebe mkp r okwu ga

3.0 ND NA KP M KW M

3.1 Ihe at nd d mkpa na nk wa daume

Ihe at nd d mkpa na nk wa daumed ka Ikeke nw na nd z (1999) dep tarag nyere:

a.Etu ire siri d n'ime n

b. Ak k ma b nkeji ire na-ar r mgbe mkp p ta

ch. n d ebugbere n n mgbe mkp p ta

A. Etu ire siri d n'ime n p tara ma ire d elu ka d ala n' n mgbe mkp p ta da-ume. Nke a b mata etu ire siri d nso n'akpo ma b ka ogologo ya siri jedebe n'akpo. n d a nwere nkeji an .

Ha b :	Ntachi	/i/ /u/
	Ntachi etiti	/ɪ/ / /
	Oghe etiti	/e/ /o/
	Oghe	/a/ / /

Ikeke nw na nd z (1999) k wara na ntachi-etiti na oghe-etiti b aha otu IPA nabatara e ji dochie ntachit na nghet .

B. Ak k ma b nkeji ire na-ar r mgbe mkp p ta b mata ma b n'ihu ire ka b n'az ire ka da siri p ta. Na nk wa nke a, e nwere nkewa ab . Ha b :

daume ihu	/i/ /ɪ/ /e/ /a/
daume az	/u/ / / /o/ / /

C. n d ebugbere n n mgbe mkp p ta b ch p ta ma ebugbere n ajasara ajasa ka ha ad okirikiri mgbe a na-akp p ta daume nke b la

daume njasa	/i/ /ɪ/ /e/ /a/
daume okirikiri	/u/ / / /o/ / /

d mkpa gh ta na daume ihu niile b cha daume njasa ebe daumeaz niile b chakwa daume okirikiri.

NNWALE ONWE

- I kwetara na nd miche d n'etiti nghet na oghe-etiti? Kwadoo az za g .
- Kp s p ta ihe at d mkpa na nk wa daume.
- ch. Dep ta mkp r okwu ab ab ebe daume nd a n n'etiti / /, /e/, /o/

3.2 Nn na ebe daume

Na nkeji a, e lebara anya n' n d d iche iche daume na-an na mkp r okwu Igbo.

Na mmalite mkp r okwu

a

any

ag

e

elu

echi

i

ime

ije

sha

kpa

o

okwu

ole

ka

r

u

ubi

ugo

g

ka

N'etiti mkp r okwu

a

asat

karama

e

nnekwu

obere

i

echiche

onyinyo

ak d

z za

o

nwoke

igodo

b ch

g d

u

ebule

omume

nn n

t t

Na njedebe mkp r okwu

a

mkpa

nwa

e

ose

nne

i

ugiri

mkpi

tar

akp

o

ero

ego

an

b

u

egwu

otu

akw

mb

NNWALE ONWE

- i. N' n d ole ka daume na-an na mkp r okwu Igbo?
- ii. Nye otu m ma at nke g .

4.0 MMECHI

daume Igbo enweghi mgbochi b la gbasara n d ha na-an na mkp r okwu. Nke a p tara na e nwere ike h daume n'ebe b la na mkp r okwu.

5.0 NCH K TA

daume ihu niile b daume njasa ebe daume az niile b kwa daume okirikiri. daumenwere ike n n'ebe b la na mkp r okwu.

6.0 IHE OMUME

1. G n b njirimara daume?
2. Olee ihe i chere kpatara daume ji an n'ebe b la na mkp r okwu?

7.0 NR T AKA/NG MI

Ikeke nw , Clara, Ezikeojiak ,P.A. ban , An sike & Ug j , Jumbo. (1999). *F n l j na grama Igbo*. Ibadan: University Press PLC.

Nkamigbo, Linda C. (2010). *Kwuo ya n'Igbo*. Nkpor: Brystevand Publishers.

YUNIT 3 NK CHA MGBOCHIUME

ND NA

- 1.0 Mkp lite
- 2.0 Mbunuche
- 3.0 Nd na kp m kw m
 - 3.1 Nk cha mgbochiume
- 4.0 Mmechi
- 5.0 Nch k ta
- 6.0 Ihe Omume
- 7.0 Nr t aka/Ng mi

1.0 MKP LITE

Mgbochiume b mkp r da as s nd a na-enwe mgbochi ikuku na mkp p ta ha site na mmet k njiakp na ibe ya. Igbo nwere mgbochiume iri ab na asat . Ha b /b d f g gb gw h k kp kw m n w p r s t v w j z/

Chaat Mgbochiume

Chaat mgbochiume na-egosi etu esi akp p ta mgbochiume Igbo.

da d mkp p ta	Keegbu gbere	Keegbu gbere n na	keany r	Keaz a ny r	keakpo ike	keakpo nro	keegbug bere n na d	keeko akp r
da ike ndap ta	p b		t d			k g	k ^w g ^w	
da ke ndakpu	kp gb							
da imi	m		n				w	
dach								
dash		f v	s z					
dar			r					
dal								
daway / day					j		w	

da nd d n'aka ekpe b enweolu/ daogbi ebe nd d n'aka nri b nnweolu/ da mp ta.

2.0 MBUNUCHE

Na ngw cha yunit a, ga-enwe ike:

- kp p ta mgbochiume nd b enweolu na nd b nnweolu
- k was da mgbochiume nke ma

3.0 ND NA KP M KW M

3.1 Mkp p ta mgbochiume na mkp r okwu ga

/p/ daike kegbugbere n enweolu

opi

apa

pio

p a

/b/ daike kegbugbere n nnweolu

ba

ubi

bie

b

/t/ daike keany r enweolu

t

t

tie

taa

/d/ daike keany r nnweolu

nd

ude

daa

die

/k/ daike keakponro enweolu

aka

nk

k

kee

/g/ daike keakponro nnweolu

ga

g

g

gaa

/kw/ daike keegbugbere n na d akpo enweolu

kwa

akwara

kwee

kwa

/gw/ daike keegbugbere n na d akpo nnweolu

ogwe

egwu

ogwu

gwee

/kp/ daike ndakpu keegbugbere n enweolu

kpa

kp

kp

kpa

/gb/ daike ndakpu keegbugbere n nnweolu

ugbo

mgbe

ogbe

gba

/m/ daimi keegbugbere n

mma

ome

mmee

m

/n/ daimi keany r

n

an

nne

na

/ / daimi keakpoike

anya

nya

enyi

any

/ / daimi keakponro

ań

ańa

ń

ń

/ w/ daimi keegbugbere n na d akpo

nwa

nwaany

nwe

nw

// dach keaz any r enweolu

ochie

cha

ch a

chee

// dach keaz any r nnweolu

uju

aj

ja

jee

/f/ dash keegbugbere n na eze enweolu

af

efu

f

fee

/v/ dash keegbugbere n na eze nnweolu

mv

v

avele

av a

/s/ dash keany r enweolu

as

s

esu

sa

/z/ dash keany r nnweolu

z

az

eze

nzu

// dash keaz any r enweolu

asha

sha

sh

// dash keakponro nnweolu

agha

agh

ghaa

ghee

// dash keekoakp r nnweolu

ah

ihe

h

ihu

/r/ dar keany r nnweolu

uru

ar

ire

ara

// dal keany r nnweolu

l

elu

ala

olu

/j/ day keakpoike nnweolu

oyi

y

y

yie

/w/ day keegbugbere n na d akpo nnweolu

ewu

wa

ewi

aw

NNWALE ONWE

- i. Ole ka mgbochiume Igbo d ?
- ii. K waa ihe d iche d n'etiti mgbochiume nd a:
 - /f/ na /v/
 - // na //
 - /kp/ na /k/

4.0 MMECHI

N'Igbo, daimi niile, dar , dal na day b nnweolu. da niile b enweolu b daogbi ebe da nd b nnweolu b damp ta.

5.0 NCH K TA

A b a na chaat mgbochiume, da nd d n'aka ekpe b enweolu / da ogbi ebe nd d n'aka nri b nnweolu / da mp ta.

Ebe e nwere naan otu da n'igbe ap tagh na ogbo ya ad gh n'as s mba wa nd z kama p tara na Igbo enwegh mkp r da as s ah .
m ma at : Igbo izugbe nwere naan dash keaz any r enweolu // mana ogbo ya nnweolu / / d na Bekee n'olu-nd Igbo.

6.0 IHE OMUME

Dep ta akara na-an chi anya mkp r da as s nd a:

1. daike ndakpu keegbugbere n nnweolu
2. dach keaz any r enweolu
3. ch. daike keakponro nnweolu
4. daimi keegbugbere n na d akpo

7.0 NR T AKA/NG MI

Ezeuko, R.O. & A.E. Chira. (2005). *Fonetiiks na fon loj Igbo*. Awka: Kristophel Publishers.

walaka, MaryAngela. (1996). *Fon l j na nt as s Igbo*. Ibadan: Kraft Books.

YUNIT 4 D D NA NN NA EBE MGBOCHIUME

ND NA

- 1.0 Mkp lite
- 2.0 Mbunuche
- 3.0 Nd na kp m kw m
 - 3.1 Nke d mgbochiume
 - 3.1.1 Ebe mkp p ta mgbochiume
 - 3.1.2 d d mkp p ta mgbochiume
 - 3.1.3 n d mkp da/eko akp r mgbe mkp p ta mgbochiume
 - 3.2 Nn na ebe mgbochiume
- 4.0 Mmechi
- 5.0 Nch k ta
- 6.0 Ihe Omume
- 7.0 Nr t aka/Ng mi

1.0 MKP LITE

A b a na nnyocha d d mgbochiume, ihe at d mkpa. Ha b :

- a. Ebe mkp p ta mgbochiume
- b. d d mkp p ta mgbochiume
- ch. n d mkp da/eko akp r mgbe mkp p ta mgbochiume

Ebe mkp p ta na-egosip ta nji-akpo ya na ibe ya na-ejek r ta mgbe mkp p ta da, nke p tara ebe a na-enwe mmek r ta nji-akpo na ibe ya. O nwere ike b n'egbugbere n , n'any r , n'akpoike, n'akponro, wdg.

d d mkp p ta ma b etu mkp p ta b etu mkp r da siri daa da ma b ha n mgbe a kp p tara ya. na-egosi etu ihe mgbochi siri met ta ikuku ume/ waakp m da e ji emebe mgbochiume ah . Ikeke nw na nd z (1999) k wara na ihe mgbochi nwere ike mee ka ikuku ume kw s kpam kpam obere oge. b r na e jiri ike mepee mgbochi a, mgbochiume a ga-akp p ta b daike d ka /p, b, t, d/. O nwere ike b r na e nweghi ihe mgbochi kpamkpam kama na gan okwu ab b ak tara n ma hap obere oghere n'etiti ha ebe ikuku si ap . d mgbochiume e si etu a kp p ta ka a na-akp dash d ka /f, v, s, z, /. E nwee ihe mgbochi kpamkpam, nke mere ka ikuku ghara p ta obere oge, d ka na mkp p ta daike ma mepee yab mgbochi nway d ka na mkp p ta da sh , a na-enweta dach .

Na nk wa n d mkp da, a ga-ekwu ma ha na-ama jijiji mgbe a na-akp p ta mgbochiume ah . b r na ha na-ama jijiji, a na-as na mgbochiume ah nwere olu. b r na e nweghi majijiji mkp da, a

na-as mgbochiume ah b mgbochiume enweolu. Na nkegas nd na-esote, e lebara anya n' d d kp m kw m.

2.0 MBUNUCHE

Na ngw cha yunit a, ga-enwe ike:

- k waa ihe d d uda b
- k waa ebe mkp p ta mgbochiume d iche iche
- kp p ta d d mkp p ta mgbochiume d iche iche
- dep ta n d mkp - da/eko akp r mgbe a na-akp p ta mgbochiume ga
- k was n d mgbochiume nwere ike n na mkp r okwu.

3.0 ND NA KP M KW M

3.1 Nke d mgbochiume

Any ga-ak wami ihe nd d mkpa na mkp p ta mgbochiume.

3.1.1 Ebe mkp p ta mgbochiume

Ebe mkp p ta mgbochiume b gan okwu nd na-emet ta ma a na-akp p ta mgbochiume. Ezeuko na Chira (2005) k wara ebe mkp p ta mgbochiume ga tinyekwara akp makp ha. Ebe mkp p ta na akp makp mgbochiume ga ha dep tara g nyere:

1. da keegbugbere n ab
 - a. /p/na /b/
 - i. Ebugbere n elu na nke ala na-emechik ta.
 - ii. d akpo na-emechi ka ikuku ghara ga n'uji imi.
 - iii. Ebugbere n elu na nke ala ga-emege; a n da.
 - iv. Akp m da sitere n' waikuku nsinang .
 - v. Ha b da n .
 - b. /kp/ na /gb/
 - i. Ebugbere n elu na nke ala na-emechik ta; n'otu aka ah , d akpo na-emechi ka ikuku ghara ga n'uji imi.
 - ii. Mkp da na-as chigha az site n'ume nkukpu.

- iii. Egbugbere n elu na nke ala ga-emege a n da.
- iv. Akp m da sitere n' waikuku nsina eko.
- v. Ha b da n .

ch. /m/

- i. Egbugbere n elu na nke ala na-emechik ta.
- ii. d akpo na-emege ka ikuku si n'uji imi gafee.
- iii. Egbugbere n elu na nke ala ga-emege da imi ap ta.
- iv. Akp m da sitere n' waikuku nsinang .
- v. b daimi.

2. da keegbugbere n na eze

a. /f/ na /v/

- i. Egbugbere n ala ga-emet eze elu.
- ii. Ikuku ga-esi n'obere oghere d n'etiti egbugbere n ala na eze elu gafee.
- iii. d akpo ga-emechi ka ikuku ghara ga n'uji imi.
- iv. Akp m da sitere n' waikuku nsinang .
- v. Ha b da n .

3. da keany r

a. /t/ na /d/

- i. n ire na-akpado any r eze elu.
- ii. d akpo na-emechi ka ikuku ghara ga n'uji imi.
- iii. Ak k ire na-egbochi ikuku p .
- iv. Akp m da sitere n' wa ikukunsina ng .
- v. Ha b da n .

b. /s/ na /z/

- i. n ire na ah ire na-an kete any r eze elu nso mana a na-enwe obere oghere n'etiti ha ebe ikuku ga-esi gafe.
- ii. d akpo na-emechi ka ikuku ghara ga n'uji imi.
- iii. Eze elu na eze ala na-an kwa nso.

iv. Akp m da sitere n' wa ikukunsina ng .

v. Ha b da n .

ch. /n/

i. Ah ire na-akpado any r eze elu.

ii. d akpo na-emege ka ikuku si n'uji imi gafee.

iii. Ah ire na-agbadata ka e wee nwee da imi.

iv. Akp m da sitere n' wa ikukunsina ng .

v. b da imi.

d. /r/

i. n ire na-ak t n'az any r na-ama jijiji.

ii. d akpo na-emechi ka ikuku ghara ga n'uji imi.

iii. Akp m da sitere n' wa ikukunsina ng .

iv. b da n .

e. //

i. n ire na-atachido n'az any r eze elu, ebe a ga-enwe oghere n'ak k ire ab ebe ikuku si agafe.

ii. d akpo na-emechi ka ikuku ghara ga n'uji imi.

iii. Akp m da sitere n' wa ikukunsina ng .

v. b da n .

4. da keaz any r

a. //na//

i. Ah ire na-emet ta az any r .

ii. d akpo na-emechi ka ikuku ghara ga n'uji imi.

iii. Ikuku na-ap mgbe mkpachi ah ire na az any r meghere, da eso ya.

iv. Akp m da sitere n' wa ikukunsina ng .

v. b da n .

b. //

- i. n ire na az any r na-ab ak ta nso nke na a na-enwe obere oghere n'etiti ha ebe ikuku si agafe.
- ii. Egbugbere n elu na nke ala na-ad okirikiri.
- iii. d akpo na-emechi ka ikuku ghara ga n'uji umi.
- iv. kp m da sitere n' wa ikukunsina ng .
- v. b da n .

5. da keakpoike

a. //

- i. d akpo na az ire na-an ezigbo nso iji gbochie ikuku gafe n' wa n .
- ii. Ah ire na-akpachido akpoike.
- iii. d akpo na-emeche ka ikuku si n'uji imi gafee.
- iv. Akp m da sitere n' wa ikukunsina ng .
- v. b da n .

b. /j/

- i. Ah ire na-ar go elu n r akpo ike nso ma nye nwa obere oghere ebe ikuku ga-esi gafe.
- ii. d akpo na-emechi ka ikuku ghara ga n'uji imi.
- iii. Akp m da sitere n' wa ikukunsina ng .
- iv. b da n .

6. da keakpo nro/ da ke d akpo

a. /k/ na /g/

- i. Az ire ga-ala elu ga kpachido n'akpo nro ka ikuku ghara gafe n' n .
- ii. d akpo na-emechi ka ikuku ghara ga n'uji imi.
- iii. Akp m da sitere n' wa ikukunsina ng .
- iv. Ha b da n .

b. //

i. Az ire na-akpachido n'akpo nro (d akpo) nke ga-egbochi ikuku isi n' n gafee.

ii. d akpo na-emegehe ka ikuku si n'uji imi gafee.

iii. Az ire na-agbadata da e wee p ta.

iv. Akp m da sitere n' wa ikukunsina ng .

v. b da imi.

ch. / /

i. Az ire na-emet r akpo nro (d akpo) ma nye nwa obere oghere n'etiti ha ebe ikuku ga-esi p .

ii. d akpo na-emechi ka ikuku ghara ga n'uji imi.

iii. Akp m da sitere n' wa ikukunsina ng .

iv. b da n .

7. da keegbugbere n na d akpo

a. /kw/ na /gw/

i. Az ire na d akpo na-ab ak te nso site n'az ire sulielu gajekwuru d akpo.

ii. d akpo na-emechi ka ikuku ghara ga n'uji imi.

iii. A na-enwe obere oghere ebe ikuku si agafe.

iv. Egbugbere n na-ad okirikiri.

v. Akp m da sitere n' wa ikukunsina ng .

vi. Ha b da n .

b. /w/

i. Az ire na-as li elu n'az gaa nso n' d akpo ma hap nwa obere oghere ebe ikuku si aga.

ii. d akpo na-emechi ka ikuku ghara ga n'uji imi.

iii. Egbugbere n na-ad okirikiri.

iv. Akp m da sitere n' wa ikukunsina ng .

v. b da n .

ch. / w/

- i. Az ire na-as la az laa elu ga tado n' d akpo ka ikuku ghara isi n' n ga.
 - ii. d akpo na-emeghe ka ikuku si n'uji imi gafee.
 - iii. Akp m da sitere n' wa ikukunsina ng .
 - iv. b da imi.
8. da keekoakp r

a. / /

- i. me nkukpu na nke nkukp ta jek r n'eko akp r mee ka mkp da maa jijiji.
- ii. b da mp ta.
- iii. b da ekoakp r .
- iv. b da n .

3.1.2 d d mkp p ta mgbochiume

d d mkp p ta mgbochiume na-egosi etu e si enwemgbochi ikuku oge a na-akp p ta mgbochiume tinyere wa ikuku ebe mgbochi ah sitere. Ezeuko na Chira (2005) k wap tara ihe ndi a d.k.

1. da ike

E kere daike z ab . Ha b :

- a. da ike ndap ta
- b. da ike ndakpu

da ike ndap ta

Na mkp p ta da as s nd a, a na-enwe mgbochi ikuku sitere n' wa ikukunsina ng . Mgbochi ikuku na-ab n'ebe e nwere njiakp nd a:

- i. egbugbere n ab imechi kpankpam
- ii. n ire kpachido n'any r eze elu
- iii. az ire kpachido n' d akpo

b r na mkpachido ikuku meghee, da nd a na-adap ta n'ike site n'ikup ta ume. Nke a p tara na da ha na-esizi n'uji n p ta n' n ka a gbara egbe. daas s nd a b daike ndap ta:-

/p/ /b/ /t/ /d/ /k/ /g/ /k^w/ /g^w/

da ike ndakpu

Na mkp p ta da as s nd a, a na-enwe mkpachido ikuku si n' wa ikuku nsina eko. Mgbochi ikuku na-ab n'ebe e nwere njiakp nd a:

- i. egbugbere n ab imechikampam ma bat n'ime
- ii. d akpo kpachido nk l ka ikuku ghara isi n'uji imi gafe

Site n'ume nkukpu na mkpachido ikuku n' wa n z agagh ad chaka mgbe a na-akp p ta daike ndap ta, n'ih i na ikuku na-as chigha az n'eko akp r . Mgbe mkpachido a meghere, ikuku na da na-adap ta. Mana ike o ji ap ta eruchagh ka nke da ike ndap ta. da ike ndakpu d s s ab n'as s Igbo. Ha b /kp/ na /gb/

2. daimi

Mgbe a na-akp p ta da imi, a na-enwe mgbochi ikuku n'oghere n ebe ikuku ga-alachi az n'imi ka e wee mep ta da site n'imi. da imi g nyere /m/ /n/ / / / na / ^w/.

3. dach

Mgbe a na-akp p ta da as s nd a, eze na-ebu z tachie. Mgbe ga-asaghezi, ikuku esi n'oghere eze p nway nway , m maat , / / na / /

4. dash

Na mkp p ta da as s nd a, a na-enwe mgbochi ikuku n'uji n mgbe eze na egbugbere n na-emet ta mana a ga-enwe oghere ebe ikuku ga-esi na-am p am p , ma at : /f/ /v/ /s/ /z/ / / / na / /.

5. dar

Na mkp p ta da as s nd a, ire na-eje k t any r ma na-ak s s s s . dar d n'Igbo b naan /r/.

6. dal

Mgbe a na-akp p ta da as s a, ire na-eje met any r , ikuku ana-esi n'ak k ya naab na-agafe. dal d n'Igbo b //.

7. day

Na mkp p ta da as s nd a, a na-emeghe egbugbere n ka ikuku si n'oghere n na-ap ta werewere. Ha b da akp . Lee ha /j/ na /w/

3.1.3 n d mkp da/eko akp r na mkp p ta mgbochiume

d z ihe ab a r t r aka na nk wa nd miche d n' da as s d kand miche d n' da ike, dach na dash . Ihe d iche b na f d b enweolu / daogbi ebe nd z b nnweolu / da mp ta. E nweghi d nd miche d etu a n' da imi, dar , dal na day . b mkp da wetara nd miche a. Etu mkp da d n'eko akp r na-egosi ma da ga-ab da mp ta. Ezeuko na Chira (2005) kwadoro echiche a ma k wap ta na mgbe ikuku si n'akpa ume ap ta rutere n'eko akp r , n'ebe ogwooro d , mkp da nwere ike n n d d iche iche site n' d mkp r da as s a na-akp p ta n'oge ah . b ike ngafe ikuku na-as ghe oghere eko akp r manamgbe ike ikuku a belatara, oghere eko akp r as ch kwa.

Nd miche d n' da enweolu na dannweolu

Nd miche Ikeke nw na nd z (1999) k wara b na da enweolu ma b da ogbi b da nd ah ebe mkp da anagh emeghar ah na mkp p ta ha; n'aka nke z , dannweolu ma b da mp ta b da nd ah mkp da na-emeghar na mkp p ta ha. Nke a gosiri na mkp da na-ar r p tara ihe n'igosip ta mgbe mkp r da as s b enweolu na mgbe b nnweolu .

b daume na mgbochiume mejup tara mkp r da as s Igbo. daume Igbo niile b da nnweolu mana mgbochiume Igbo ab chagh da nnweolu. f d b da nnweolu ebe nd z b da enweolu .

Ha gara n'ihu k waa na etu e si amata da nnweolu na nd b enweolu b na a b a na mkp p ta mkp r da as s , e nwere ike ijide ogwooro aka. b r na mkp da amaa jijiji mgbe a na-akp p tamkp r da as s , a mara na b nke nnweolu . Mana b r na mkp da amagh jijiji na mkp p ta mkp r da as s , a mara na b enweolu . Lee mgbochiume nnweolu d n'Igbo izugbe:

/ b d g g^wgb m n ^w v z r j w/

Lekwa mgbochiume enweolu :

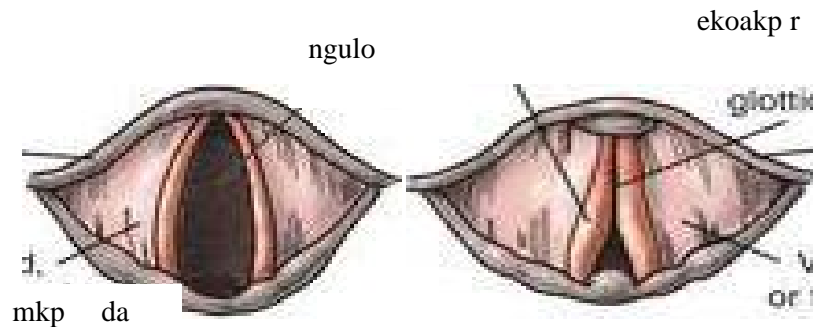
/p t k k^wkp f s /

Eko akp r

Eko akp r b oghere d n'etiti mkp da. t t ka akp makp ak waala r eko akp r na-ar na mkp p ta da (H , iji maa at , Clark, Yallop na Fletcher (2007), Ladefoged (2006), Ikeke nw na nd z (1999)).

N'okwu Ezeuko na Chira (2005), e nwere n d at p tara ihe eko akp r na-an . N'ebe ogwooro d , e nwere ñgùlò ab chewere onwe ha ihu. Ha nwere ike d sa ad sa ma b s chie as chie. N'ihu ñgùlò ab nd a ka e nwere mkp da. Mgbe ñgùlò ab ah d sara, oghere ad n'etiti ha. b oghere a ka a na-akp eko akp r . Etu oghere a siri gbasadebe na-egosi ka mkp da ga-esi n sas mgbe ikuku na-agafe n'eko akp r . b ike ebili ikuku ji agafe na-as ghe oghere eko akp r . Ma ebili ikuku beleta, oghere eko akp r as chikwa.

Lee eserese na-egosi eko akp r na mkp da



n d at eko akp r na-an :

- a. Mmechi eko akp r
- b. Mmeghet eko akp r
- ch. Mmeghecha eko akp r

Mmechi eko akp r

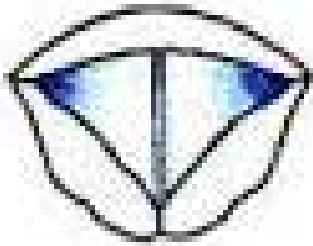
Eko akp r nwere ike mechie kpamkpam, nke na ikuku agagh agafe. n d a agagh ekwe ka mkp da gbasaa ma b n sas a. b r na ekoakpiri meghee n'ike, da e nwere ike inwe n'oge a b daeko/ /. Mkp r da as s a anagh ap ta ihe n'Igbo izugbe mana e nwere olund nwere ya. m ma at n'Olund rata Owere, e nwere:

weta/we a/

p ta/p a/

Mmechi eko akp r nwere r nd z na-ar nd ab gh mkp p ta da d ka kwa kwara, ibulite ibu d ar , ny ns , wdg.

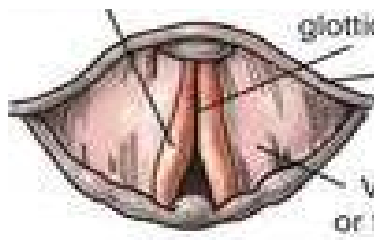
Lee eserese mmechi eko akp r



Mmeghet eko akp r

Eko akp r nwere ike nwee obere oghere. N’oge d etu a, mkp da na-agbasa ma n debechaa onwe ha nso ka ikuku si na mwar ha na-agafe. Mgbe ikuku a na-agafe, ga-eme ka mkp da na-ama jijiji. da mgbochiume b la a kp p tara n’ n d a b da nnweolu / da mp ta. muma at /b d g v z/.

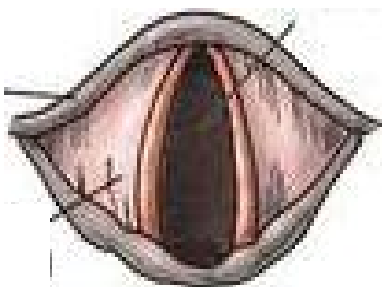
Lee eserese mmeghet eko akp r



Mmeghecha eko akp r

Eko akp r nwere ike meghechaa, nke na mkp da ga-as k cha n’ak k . N’ n d d etu a, ikuku na-agafe n’enwegh mmekpaah b la. Mkp da anagh ama jijiji ma ikuku na-agafe n’eko akp r . da mgbochiume b la a kp p tara n’ n d d etu a b da enweolu / da ogbi, ma at :/p t k f s/

Lee eserese mmeghecha eko akp r



NNWALE ONWE

- i. Kp s p ta da enweolu ise ma.
- ii. Dep ta ebe mkp p ta ha ga.
- iii. ch. Kedu ihe at d mkpa na nnyocha mgbochiume?

3.2 Nn na ebe mgbochiume

Nn na ebe mgbochiume Igbo na nke daume ab gh otu. daume nwere ike n n'ebe b la na mkp r okwuIgbo mana mgbochiume anagh ejedebe mkp r okwu Igbo. z kwa, dash keaz any r // anagh ebido mkp r okwun'Igbo izugbe.

Lee mgbochiume na nn na ebe ha ga:

Mmalite mkp r okwu n'etiti

b

ba

bi

ch

ncha

ch

d

ude

da

f

fe

af

g

g

g

gb

gba

gba

gh

gh

gh

gw

ngw

gwa

h

ihe

h a

j

j

j

k

ak

ke

kp

okpu

kpa

kw

nkw

kwe

l

lee

ala

m

ome

mma

n

nna

an

ñ

aña

añụ

nw

nwoke

enwe

ny

nye

enyo

p

p

apa

r

re

ra

s

s

saa

sh

sha

asha

t

at

taa

v

v

mv

w

inwe

waa

y

y

yie

z

zie

z

NNWALE ONWE

Were mkp r okwu nd a d n'okpuru nye m ma at mgbe ha n na mmalite na etiti mkp r okwu: p, d, v, r

4.0 MMECHI

d d mgbochiume e nwere n'Igbo b : keegbugbere n ab :/p b m kp gb/; keegbugbere n na eze:/f v/; keany r :/t d n s z r /; keaz any r :/ /; keakpo ike: / j/; keakpo nro/ke d akpo:/k g /; keeko akp r :/ /; keegbugbere n na d akpo: /kw gw w w/.

E nwere da ike iri n'Igbo. Isii n'ime ha b mgbochiume nge ebe nd z b mgbochiume mkp . b r na d akpo meghee, ikuku ga-esi n'uji imi gafee. da a b da imi. Mana b r na d akpomechie, ikuku ga-esi n'uji n gafee. da a na-akp p ta b da n . Ka o sila d , a k ziri akp m da wa ikuku n'ogo am mam usoro mkp r da na-ab a.

5.0 NCH K TA

D ka d n' daume, ihe at d kwa oke mkpa n' t cha mgbochiume. z ihe at nd a b ha nyere aka n'ikewa mgbochiume n' d d ha d iche iche. z ihe at nd ah b : ebe mkp p ta, d d mkp p ta na n d mkp da/eko akp r mgbe mkp p ta.

60 IHE OMUME

1. Olee nd miche h tara n' da enweolu na da nnweolu ?
2. Kedu ihe i chere mere eko akp r ji d mkpa na mkp p ta mgbochiume ?

7.0 NR T AKA/NG MI

Clark, John, Colin, Yallop & Janet Fletcher. (2007). *Introduction to phonetics and phonology (3rd edition)*. London: Blackwell.

Ezeuko, R.O. & Chira, A.E.(2005). *Fonetiiks na fon loj Igbo*. Awka: Kristophel Publishers.

Ikeke nw , Clara, Ezikeojiak ,P.A. ban , An sike & Ug j , Jumbo. (1999). *F n l j na grama Igbo*. Ibadan: University Press PLC.

Ladefoged, Peter. (2006). *A course in phonetics (5th edition)*. Boston: Wadsworth Cengage Learning.

Nkamigbo, Linda C. (2010). *Kwuo ya n'Igbo*. Nkpor: Brystevand Publishers.

YUNIT 5 NKEJIOKWU

ND NA

- 1.0 Mkp lite
- 2.0 Mbunuche
- 3.0 Nd na kp m kw m
 - 3.1 Nk wa na ngosip ta nkejiokwu Igbo
- 4.0 Mmechi
- 5.0 Nch k ta
- 6.0 Ihe Omume
- 7.0 Nr t aka/Ng mi

1.0 MKP LITE

As s b la nwere usoro e ji ejik ta mkp r da ya iji mebe mkp r okwu. E kejie mkp r okwu as s b la n'usoro a, a ga-ach p ta etu e siri mep taya. Nkejiokwu b ikeri mkp r okwud ka mkp p ta da na etu ekumume ha siri d . na-egosi nkebi ole mkp r okwu b lanwere iji mata da olu ole o nwere ike inwe. Ihe na-egosp tankeji okwuole d n'okwu na-ab daume ole na myiri daume ole d n'okwu ah . Nkumume ole e jiri kp p ta okwu ah na-egosi nkeji okwu ole okwu ah ga-enwe.

2.0 MBUNUCHE

Na ngw cha yunit a, ga-enwe ike:

- k waa ihe nkeji okwu b .
- nyeend miche d n'etiti nkeji okwuoghe na nkeji okwu ntachi.
- k waa njirimara nkeji okwu Igbo.

3.0 ND NA KP M KW M

3.1 Nk wa na ngosip ta nkeji okwu Igbo

d nkeji okwuzuru wa b nke na-enwe otumgbochiume na mbido na daume na-eso ya. Nke a ka a na-edep ta d ka 'M '. 'M' b mgbochiume ebe ' ' b daume. E kere nkeji okwu z ab . Ha b :

- a. nkeji okwu oghe
- b. nkeji okwu ntachi

A. **Nkeji okwu oghe:** Nke a b nkeji okwunke daume na-ab a na ngw s ya. b ud nkeji okwu a ka e nwere n'Igbo.

B. Nkeji okwu ntachi: Nke a b nkeji okwumgbochiume na-ab a na ngw s ya. E nweghinkeji okwuntachi n'Igbo.

N'as s mba wa f d ,a na-enwe ma nkeji okwu oghe ma nke ntachi. m ma at b as s Bekee. T lee mkp r okwu Bekee nd a:

boy	/bɔɪ/	M
sea	/si/	M
allow	/ la /	M

Mkp r okwu nd a d n'elu b cha nkeji okwu oghe n'ih na b daume mechiri ha.

Lee anya na mkp r okwu nd a na-esote:

sit	/sɪt/	M	M
come	/k m/	M	M
love	/l v/	M	M

Mkp r okwu nd a d n'elu b cha ntachi n'ih na b mgbochiume mechiri ha.

Igosip ta nkeji okwu Igbo

Mkp r okwu Igbo nwere ike inwe otu nkeji okwu, nkeji okwu ab , nkeji okwu at , nkeji okwu an , nkeji okwu ise ma b kar a. Ihe nke a p tara b na e nwere nkeji okwu d iche iche site n'etu mkp r okwu siri todebe ogologo.

Otu nkeji okwu

m ma at okwu nd a nwere otu nkeji okwu b :

- i. a, e, i, , o, - daume nd a nwere otu nkeji okwu
- ii. m, n -myiri daume nd a nwere otu nkeji okwu
- iii. isingwaa niile beere s 'b a' na 'p a' nwere otu nkeji okwu,d ka si, n , je, d , be, ti,sa,be,wdg.
- iv. nwa, ya, ha, m , ji, nwa, d , wdg.

Nkeji okwu ab

m ma at okwu nd nwere nkeji okwu ab g nyere:

a/da, a/gba,e/ro, e/ku, n/ne, n/na, o/kpu, wdg.

Nkeji okwu at

m ma at okwu nd nwere nkeji okwu at b :

a/kp /kp , /kp /kp , a/kw /kw , o/si/si, e/chi/che, n/ku/me, wdg.

Nkeji okwu an

m ma at okwu nd nwere nkeji okwu an b :

m/kp /m/kp , /da/u/me, o/go/lo/go, /ma/r /cha,
e/be/ne/be, a/g /ma/g , wdg.

Nkeji okwu ise

m ma at okwu nd nwere nkeji okwu ise g nyere: n/ke/ji/o/kwu,
/kp /t /r /kp ,

n/kwe/k /r /ta, m/gb /r /m/gba, m/gbo/chi/u/me, m/ba/da/m/ba,
/ka/a/s /s , wdg.

Nkeji okwu isii

m ma at okwu nd nwere nkeji okwu isii b :

ke/ /d /n/kwe/nye, n/kwu/ru/n/kwu/ru, e/de/me/de/o/kwu, wdg.

Nkeji okwu asaa

m ma at okwu nd nwere nkeji okwu asaa g nyere:

m/yi/ri/ /da/u/me, n/da/k /r /ta/m/kp , m/ma/m/p /r /i/che, wdg.

Njirimara nkeji okwu Igbo

- a. Naan mgbochiume enweghi ike igosip ta nkeji okwu. ga-ab r r yana da-ume.
- b. b eziokwu na myiri daume na-emechi mkp r okwu ole na ole n'Igbo, a gagh as na mkp r okwu d etu a nwere nkeji okwu ntachi, maka myiri daume na-ar r d ka da-ume.
- ch. Nkeji okwu na-egosip ta daume ole d na mkp r okwu.
- d. Nkeji okwu na-egosip ta myiri daume ole d na mkp r okwu.
- e. E nwegh nkeji okwu na-enwemgbochiume y . Mgbochiume y b ebe mgbochiume ab ma b kar a na-ad k ta n n'otu nkeji okwu. Nke a d kwa n'as s Bekee. m ma at :

street /strit/ M M M M

bread /br d/ M M M

spray /sprei/ M M M

f. Nkeji okwuna-enye aka mata akara da olu ole mkp r okwu ga-ebu.

NNWALE ONWE

a. Nye m ma at nkeji okwu nd a:

i. Nkeji okwu ab

ii. Nkeji okwu at

iii. Nkeji okwu ise

iv. Nkeji okwu isii

b. Dep ta njirimara nkeji okwu at .

4.0 MMECHI

Mkp r okwu Igbo ejedebeghi na mkp r okwu nwere nkeji okwu asaa. E nwere kar a nke a site n'etu mkp r okwu siri todebe ogologo. Ebe nkeji okwu na-ad n'okwu na-ab kar ebe e nwere daume na myiri da-ume. Nkeji okwu ole mkp r okwu d na-egosi akara da olumkp r okwu ah ga-ebu, ma at :

i. /kp /t /r /kp : E nwere daume ise n'okwu a; n'ihia, mkp r okwu a ga-ebu akara da olu ise.

ii. n/ku/me: E nwere otu myiri daume na daume ab ; n'ihia, mkp r okwu a ga-ebu akara da olu at .

5.0 NCH K TA

Ihe na-egosip ta ole nkeji okwu ga-ad na-ab mgbak ta myiri daume na daume ole d na mkp r okwu. N'otu ah kwa, ole mgbak ta myiri daume na daume d na mkp r okwu na-egosip ta akara da oluole ga-ad na mkp r okwu.

6.0 IHE OMUME

1. Ked d nkeji okwu zuru wa n ?
2. K waa nd miche d nankeji okwuoghe na nkeji okwuntachi.

7.0 NR T AKA/NG MI

Collins, Beverly & Mess, Inger M. (2003). *Practical phonetics and phonology*. London: Routledge.

Ezeuko, R.O. & Chira, A.E. (2005). *Fonetiiks na fon loj Igbo*. Awka: Kristophel Publishers.

walaka, MaryAngela. (1996). *Fon l j na nt as s Igbo*. Ibadan: Kraft Books.

MODUL 3 USORO D D DAAS S

Na modul 2, g r banyere daume na mgbochiume, ihe ha b , d d ha ga nakwa n d ha na-an na mkp r okwu. A r t kwara aka n'etu e si ekeri mkp r okwu d ka mkp p ta da na etu ekumume ha siri d . A kp r nke a nkejiokwu. Na modul a, ga-eleba anya n' f d usoro mkp r da nd na-agbanwe n' kp okwu s s nke na-ap ta ihe mgbe mkp r da n k r n na nkejiokwu. b eziokwu na as s b la nwere mkp r da e ji as ma b akp p ta ya mana Ikeke nw na nd z (1999) mere ka o doo anya na mgbe b la a na-as as s b la, a nagh akp p ta mkp r da as s n'otu n'otu. A na-akp k ha n . Mgbe a na-akp p ta mkp r da n'okwu, t t mgbanwe na-ad . b n d ime ah ma b an ah na-ebute mkpat d iche iche n' da okwu. O nwere ka mmad ga-esi na-ekwu okwu s s , f d da okwu ebelata d d ha ma b ha adap kpamkpam. Usoro mkp r da a na-ap ta ihe n'as s d iche iche na mba wa. A ga-ah tar r ya n'okwu nd mmad kwuru kwa b ch . Usoro mkp r da nd ga-ag maka ha g nyere olilo daume, ndap daume, ndap mgbochiume , mkpafanye da na mkp so.

E nwere yunit an mejup tara modul a. Ha b :

Yunit 1	Olilo daume
Yunit 2	Ndap mkp r da as s
Yunit 3	Mkpafanye da
Yunit 4	Mkp so

YUNIT 1 OLILO DAUME

ND NA

- 1.0 Mkp lite
- 2.0 Mbunuche
- 3.0 Nd na kp m kw m
 - 3.1 Nk wa na d d olilo daume
- 4.0 Mmechi
- 5.0 Nch k ta
- 6.0 Ihe Omume
- 7.0 Nr t aka/Ng mi

1.0 MKP LITE

Olilo daume n d ka isi a h r kwaba okpu n' d d daas s . b otu njirimara nkejiokwu nke na-ap ta ihe n'as s b la. Olilo daume b mgbe otu daume wegahaara d d daume z nke ya na ya n dewere na nkejiokwu. O nwere d d at . Ha b olilo ihu, olilo az na olilo mmak . Gbadaa ka g maka ha n'uju.

2.0 MBUNUCHE

Na ngw cha yunit a, ga-enwe ike:

- kwup ta mgbe olilo daume ji ap ta ihe na mkp r okwu
- k waa d d olilo daume e nwegas r
- nye m ma at olilo d iche iche

3.0 ND NA KP M KW M

3.1 Nk wa na d d olilo daume

Olilo daume b mgbe otu daume n'ime daume ab n k r n mere ka ibe ya yie ya mgbe a na-ekwu s s . b r na otu da-umemee ka nwa nne ya yie ya, ha ab na-eyi t mad n' d d mkp r edemedede. Nke a mee, da otu n'ime da-umend a na-adachi da daume nke z . d mkpa ka e kwuo na olilo daume na-elo ibe ya ap tagh na daume ah ad kwagh na mkp r okwu. b naan mgbe a na-ekwu okwu ngwa ngwa ka a na-ach p ta na e nwere olilo da-ume. Mana mgbe a ch r ide okwu ah , a na-edede ya etu o kwesiri d . Nke a p tara na olilo daume na-ap takar ihe n'ekwumekwu, ma at ,

ude¹⁺ⁱsi → udiisi (n'ekwumekwu)

Mana o rue n'odide, b r udeisi.

akw^{1+o}ru → akwooru (n'ekwumekwu)

Mana o rue n'odide, b r akw oru.

Elee anya n' m ma at nd a d n'elu, a ga-ach p ta na b daume '2' na-elo daume '1'. E nwere z olilo at n'am mam usoro mkp p ta da. A na-esite n' z olilo aba ya aha. Ikeke nw na nd z (1999:26)gossip tara z at nd a d ka:

1. A B

oliloihu

2. AB

olilo az

3. A B

CH

olilo mmak

d d Olilo daume**Olilo ihu**

Nke a b ebe daumenke d na njedebemkp r okwu nke mb mere ka daume malitere mkp r bidoro mkp r okwu nke ab yie ya. E nweghiezigbo m ma at olilo ihu n'Igboizugbe; nke a b n'ihina a nagh agbaso usoro ekwumekwu ede ya, ma at ,

nd + a	nd
onye + a	onye e
ebe + a	ebe e
okwu + a	okwu u
ego + a	ego o

Olilo az

Nke a b mgbe daume bidoro mkp r okwu nke ab n'ime mkp r okwu ab d k r n lachiri az mee ka daume jedebere mkp r okwu nke mb yie ya. D ka d n' t t as s mba wa, olilo az d t t n'Igbo, d.k.

l + elu	leelu
nd + cha	nd cha
isi + oche	isooche
elu + igwe	eliigwe
anya + k	any k

Olilommak

Nke a na-ap takar cha ihe ebe nn chi-aha 'ya' na-eso daume jedebere okwu na-eso. N' n d d etu a, 'y' d na 'ya' na-amak nye n' daume na-eso; nke a b n'ihina o yiri daume na mkp p ta. 'a' d na 'ya' ga-agbanwe ka o si kwesi iji mejup ta iwu ndak r ta da-ume, d.k.

okpu + ya okpi e
 akpa + ya akp a
 nwa + ya nw a
 ose + ya osi e
 ugbo + ya ugbie

a. Dep ta d d olilo akara nd a zip tara:

i. A → B

ii. A ← B

iii. A → B
 ↓

CH

4.0 MMECHI

b mgbe otu daume n’ime daume ab d k r n gara az ma b ihu mee ka ibe ya yie ya ka olilo daume na-ap ta ihe. b r na otu daume loo ibe ya, na-eweghara d d daume nke o loro n’ d d mkp p ta. E nwere d d olilo daume at n’Igbo. Ha b : olilo ihu, olilo az na olilo mmak .

5.0 NCH K TA

b na nkwup ta okwu s s ka a na-ah ta olilo daume na mkp p ta okwu. Mana a b a n’odide, a nagh egosip ta olilo daume belu s s ma eji ya ama at n’ederede. A b a n’olilo mmak , mgbanwe daume jedebere mkp r okwu nke mb nwere usoro na-agbaso. b r na daume ah b daar , ga-agbanwe b r ‘i’. Mana b r na DAUME AH B DAMFE, GA-AGBANWE B R ‘’.

6.0 IHE OMUME

a. Ked d d olilo p tara ihe n’olilo nd a d n’okpuru?

1. elu + igwe eliigwe
2. nke + a nke e
3. ije + ma ij ma

7.0 NR T AKA/NG MI

Ezeuko, R.O. &A.E. Chira. (2005). *Fonetiiks na fon loj Igbo*. Awka: Kristophel Publishers.

Ikeke nw , Clara, Ezikeojiak ,P.A. ban , An sike & Ug j , Jumbo. (1999). *F n l j na grama Igbo*. Ibadan: University Press PLC.

YUNIT 2 NDAP

ND NA

- 1.0 Mkp lite
- 2.0 Mbunuche
- 3.0 Nd na kp m kw m
 - 3.1 Ndap mkp r da as s
 - 3.1.1 Ndap daume
 - 3.1.2 Ndap mgbochiume
- 4.0 Mmechi
- 5.0 Nch k ta
- 6.0 Ihe Omume
- 7.0 Nr t aka/Ng mi

1.0 MKP LITE

Ndap mkp r da as s b mgbe a na-akp p tagh mkp r da as s d n'ime mkp r okwu t mad n'odide; nke a b n'ihi na da olu, nke mkp r da ah ka ad ya. Ya b na ndap da b usoroedemede, ebe a na-egosip tagh mkp r da n'edemede. Olilo da met tara ekwumekwu ebe ndap da met tara edemede. Usoro a na-ap ta ihe n' daume na mgbochiume . Kae lebaz a anya na nkega nd na-esote.

2.0 MBUNUCHE

Na ngw cha yunit a, ga-enwe ike:

- k waa ihe ndap daume b .
- k waa ihe ndap mgbochiume b .
- nye m ma at ndap mkp r da as s n'okwu.

3.0 ND NA KP M KW M

3.1 Ndap mkp r da as s

E kewara ndap mkp r da as s z ab . Ha b ndap daume na ndap mgbochiume .

3.1.1 Ndap daume

Ndap daume b mgbe a kp p tagh daume d na mkp r okwu. A na-enwe ndap daume ebe daume jedebere mkp r okwu mb na daume malitere mkp r okwu nke ab n dewere onwe ha, ma at ,

s + ekwu sekwu (ndap ' ')

oke + af	okaf	(ndap 'e')
nd + b a	nd b a	(ndap '')
ada + obi	adobi	(ndap 'a')
isi + okwe	isokwe	(ndap 'i')

A ga-amata na okwu nd a enweghi ezigbo mkp p ta ma a gbasoro usoro ndep ta ha kp p ta ha. N'agbnyeghi ka e si dee ha, onye Igbo b la ga-etinyekwa da-olu kwesiri nkeji ah r okwu nd a. Ya kpatara e ji as na gbasara naan odide okwu Igbo.

3.1.2 Ndap mgbochiume

Ndap mgbochiume b mkp p ta, nke a na-akp p tagh da mgbochiume ebe e kwesiri ka a kp p ta ya na mkp r okwu. b mgbe mkp r da as s mgbochiume dap r na mkp r okwu mgbe a na-akp p ta ya s s , ma at :

aj j a j	(ndap 'j')
ehihie eihie	(ndap 'h')
t t t	(ndap 't')
osisi oisi	(ndap 's')
az za a za	(ndap 'z')

N'ebe a kwa, d ka d n'olilo da, e jighiusoro ndap da ede Igbo izugbe.

NNWALE ONWE

- i. Dep ta m ma at ndap daume ise.
- ii. Dep ta ndap mgbochiume ise.
- iii. Mata: m ma at ga-ad iche na nd e nyerela na nk zi a.

4.0 MMECHI

Ndap p tara mgbe a na-akp p tagh da kwesiri na a ga-akp p ta na mkp r okwu. na-ap ta ihe n'ime daume nakwa mgbochiume .

5.0 NCH K TA

Ndap da-umena-ab kar mgbe e nwere daume jedebere mkp r okwunke mb na daume malitere mkp r okwu nke ab d dewere onwe ha. Ya b na ndap daume na-ab kar n'ókèmkp r okwu. d

mkpa mata na anagh enwe ndap da-umeebe daume jedebere mkp r okwunke mb mgbochiume amalitemkp r okwu nke ab . Mana ndap mgbochiume na-ab n'ime mkp r okwu.

6.0 IHE OMUME

Ked mkp r da as s nd dap r na mkp r okwu nd a ?

- a. onye + ara → onyara
- b. akw kw → a kw
- ch. ojije → oiye
- d. oke + eke → okeke

7.0 NR T AKA/NG MI

Ezeuko, R.O. & A.E. Chira. (2005). *Fonetiiks na fon loj Igbo*. Awka: Kristophel Publishers.

Ikeke nw , Clara, Ezikeojiak ,P.A. ban , An sike & Ug j , Jumbo. (1999). *F n l j na grama Igbo*. Ibadan: University Press PLC.

YUNIT 3 MKPAFANYE DA

ND NA

- 1.0 Mkp lite
- 2.0 Mbunuche
- 3.0 Nd na kp m kw m
 - 3.1 Mkpafanye da
- 4.0 Mmechi
- 5.0 Nch k ta
- 6.0 Ihe Omume
- 7.0 Nr t aka/Ng mi

1.0 MKP LITE

Mkpafa da b otu n'ime njirimara okwu mkp k ta mgbe ana-etinye mkp r da n'ime mkp r okwu ebe d bugh na mb . t t mgbemkpafa da na-ap ta ihe n'okwu mbite.

2.0 MBUNUCHE

Na ngw cha yunit a, ga-enwe ike:

- mata mgbe mkpafa da ji ap ta ihe na mkp r okwu
- Inye m ma at mp tara mkpafa da

3.0 ND NA KP M KW M

3.1 Mkpafanye da

Usoro mkp r da ebe a na-etinye mkp r da n'ime mkp r okwu ebe d bugh na mb ka a na-akp mkpafanye da. Usoro a na-ap takar ihe n'okwu mbite, ma at :

school sukulu

bread b r d

stove sitovu

N'at nd a d n'elu, a kpafanyegas r daume nd a:'u' na sukulu 'u', b red ' ', sitovu 'i'. Any ga-amatana ihe butere mkpafanye daume nd a b na as s Igbo anagh anabatamgbochiume y mana Bekee na-anabata ya. N'ih ya, okwu nd ah e si na Bekee bite nwere mgbochiume y ka a kpafanyere daume i ji meghee mgbochiume y .

b gh naan daume ka a na-etinye n'etiti mgbochiume ab iji mee ka daba n' d d nkeji okwu as s Igbo. N'ih i nke a, a ga-ak wa mkpafanye da d ka da b la e tinyere na mkp r okwu iji mee ya ka o kwe mkp p ta. Oge f d , a na-akpafanye daume na da olu. Lee ihe at nd a:

chukwu + ka → chukwúkà

ije + di → íjèéd

chike + nwere → chikéènwèrè

m ma at nd a b na mkp r okwu ebe e nwere nd miche n' da olu. b r na e nweghind miche n' da olu a gagh enwe mkpafanye da olu.

NNWALE ONWE

Chep ta okwu mbite ise nwere mgbochiume y ma were ha zip ta mkpafanye da .

4.0 MMECHI

Mkpafanye da b usoro mkp r da ebe a na-ewere da tinye n'okwu iji mee ka o kwe mkp p ta.

5.0 NCH K TA

Mkpafanye da na-ap takar ihe n'okwu mbite ebe a na-etinye daume n'etiti mgbochiume ab iji mee ka daba n' d d nkeji okwu as s Igbo. b gh naan daume ka e ji ezip ta mkpafa da. Oge f d , a na-akpafanye daume na da olu. Mgbe b la a kpafanyere da olu, a mara na da olumkp r da as s , nke jedebere okwu nke mb na da olumkp r da as s bidoro okwu nke ab ab gh otu.

6.0 IHE OMUME

1. G n b mkpafanye da ?
2. Nye m ma at mkpafanye daume at .

7.0 NR T AKA/NG MI

Ikeke nw , Clara, Ezikeojiak ,P.A. ban , An sike & Ug j , Jumbo. (1999). *F n l j na grama Igbo*. Ibadan: University Press PLC.

YUNIT 4 MKP SO

ND NA

- 1.0 Mkp lite
- 2.0 Mbunuche
- 3.0 Nd na kp m kw m
 - 3.1 Mkp nakpo
 - 3.2 Mkp nimi
 - 3.3 Mkp nume
 - 3.4 Mkp negbugbere n
- 4.0 Mmechi
- 5.0 Nch k ta
- 6.0 Ihe Omume
- 7.0 Nr t aka/Ng mi

1.0 MKP LITE

E nwere da mgbapanye a na-eji emejup ta mkp zu. b mkp so. E nwegas r d mkp so d iche iche n'as s Igbo ma nke a kara met ta olund .Mkp so nd kara p ta ihe b :

- mkp nakpo akara ya b /j/
- mkp nimi akara ya b /~/
- mkp nume akara ya b /h/
- mkp negbugbere n akara ya b /w/

2.0 MBUNUCHE

Na ngw cha yunit a, ga-enwe ike:

- k waa ihe mkp nakpob
- mata ihe mkp nimib
- dee ihe banyere mkp nume
- k wap ta ihe mkp negbugbere n b
- inye m ma at mkp so niile e nwere n'Igbo.

3.0 ND NA KP M KW M

3.1 Mkp nakpo

Mkp nakpo b mkp so da akpo; mgbe a na-akp p ta da, a na-akp k nyere ya da 'y', d.k:

p á[p^já] – jiri tar tie

h á[já] - t ghar a okirikiri ugboro ugboro

p tara na nkeji okwud ka[p^ja] na [j^a] adabagh n'usoro nkeji okwu
Igbo?Mba! Igbo ji mkp so emep ta mkp iche, d.k.

pá[pá] - jizi p á[p^já] - jiri tar tie

há[á] - nn chi onye at h á[já] - t ghar a okirikiri ugboro ugboro
p [p] - t h [] - t ghar

Ihe gosiri na 'y' mkp nakpo ab gh daume b na e nweghi ike
ikewap ya site n' daume na-eso ya n'okwu. z kwa, e wep daume
na-esote ya, echiche okwu d na ya ga-agbanwe, nweta echiche z , d
ka

p [p]

h []

N'ebe a, ha agh la daume kw r onwe ha; ha ab gh z mkp so. Nke
at , mgbe okwu d na ya kw r onwe ya, ' ' mkp soanagh ebu da
olu; ya kpatara na e ji 'y' an chi anya ya.

NNWALE ONWE

- i. G n b mkp nakpo?
- ii. Nye m ma at ya ab .
- iii. ch. G n mere na mkp so mkp nakpo ab gh mkp r da?

3.2 Mkp nimi

Mkp nimi b da mkp so nke na-eme ka ikuku mkp p ta si n'uji imi na
nke n na-ap . Mkp nimi na-esokar dash d ka /f/ /v/ /s/ /z/ / / / / na
dar d ka /r/. da imi na-esokwa mkp p ta da-ume. A ga-
ah kwamkp nimi ka ndakwasa daimi n' da n , ma at :

ar

as

z

ah

ara

NNWALE ONWE

- i. G n b mkp nimi?
- ii. Nye m ma at ya ab .
- iii. ch. Olee ihe d iche na mkp nimi na mkp nakpo?

3.3 Mkp nume

b da mgbanwe a na-enwe mgbe a ch r kp p ta da n .N’oge a, d akpo, b nke mechiri emechi, ga-emeghe n’ike, ikuku esi n’ n na n’imi dap ta ozigbo.Nke a na-eme na da n ah na-agbanwe.Enwekwara ike h mkp nume d ka ebili ikuku si n’imi dakwas mkp p ta da ike, ma at ,

a. b^ha ya g ba - akp

b. p^h - kp nw p - f

A ga-ah na ‘b^ha’ na ‘ba’ enweghi otu echiche ma b otu d mkp p ta. Etu a kwa ka d na ‘p^h’ na ‘p’; nke a b n’agbanyeghi na ha nwere otu da olu.

Na nnyocha mkp r da as s , d z ab e nwere ike iji k wap ta mkp nume. Ha b nd a:

a. mgbochiume y

b. mgbochiume nwere mkp so

A gagh ewe at mat nke mb n’ihi na e nweghimgbochiume y , nke p tara ihe kp mkw m n’Igbo. A ga-as na mkp nume b mgbochiume nwere mkp so. Ihe na-akwado nk wa a b na mgbochiume nwere mkponume na-eweta ngh ta d iche iche n’okwu, ma at ,

a. tara at . /t/ [at]

b. O gburu at^h /t^h/ [at^h]

NNWALE ONWE

i. G n b mkp nume?

ii. Nye m ma at ya ab .

3.4 Mkp negbugbere n

Lee da nd b da mkp negbugbere n - /k^w/ /g^w/ /w/. d ihe d ka z at e nwere ike iji k waa mkp negbugbere n . O nwere ike b r :

a. nsoje mgbochiume na da-ume

b. nsoje mgbochiume na day

ch. mgbochiume nwere mkp so

Mkp negbugbere n ad gh ka mkp nakpo n’ihi na daume anagh ap ta ihe na ya d ka o si eme na nke mkp nakpo. N’ihi nke a,

mkp negbugbere ab gh nsoje mgbochiume na day ebe Igbo na-enwegh mgbochiume y . Etu ka mma iji k wap ta mkp negbugbere n b s na b mgbochiume nwere mkp so.

Mkp negbugbere n b mgbanwe da keegbugbere n na-agbanwe da nd ha dakwas r na mkp kp ta ha. E nwere ike h ya ka ebugbere n d okirikiri mgbe a na-akp p ta da mkp zu. N’oge a, az ire na-aga met akp nro maka da mkp zu, ebe a ga-enwe ebugbere n d okirikiri maka da mkp so.Lee m ma at nd a:

t / t^w / luo /l^wo/

r / r^w / agwa /ag^wa/

NNWALE ONWE

- i. G n b mkp negbugbere n ?
- ii. Nye m ma at ya ab .

4.0 MMECHI

Mkp so b da mgbapanye ga a na-eji emejup ta mkp zu. Mkp so karad olund Igbo. E nwegas r d mkp so d iche iche mana nd kara p ta ihe b :mkp nakpo, mkp nimi, mkp nuume na mkp negbugbere n .

5.0 NCH K TA

Mkp nakpo b da akpo ike, mkp so ‘y’, na-eso mkp p ta da n kw r onwe ya.N’ f d oge,nkeji okwumkp nakpo na-ezip ta da-ume;mgbe f d , na-an ka mkp nakpo. Ihe nke a gosiri b na b gh daume ka e nwerena ndok okpuru. Mkp nimi b da ebe ikuku na-aga n’imimgbe a na-akp p ta da n . Na mkp p ta mkp nume, a na-eweli d akpoelu mgbe a na-akp t mkp r da.Mkp negbugbere n b mkp so da keegbugbere n mgbe a na-akp p ta mkp r da; nke a na-eme ka ebugbere n gbaa okirikiri na mkp p ta da.

6.0 IHE OMUME

1. Ked akara mkp so nd a?
 - i. Mkp nakpo
 - ii. Mkp nimi
 - iii. Mkp nume
 - iv. Mkp negbugbere n
2. K waa d mkp so p tara ihe n’okwu nd a ma nyekwa m m at ab nd nke g .

- i. [ap^ja]
- ii. [ɪr]
- iii. [ak^h]
- iv. [ɪd^w]

7.0 NR T AKA/NG MI

Ezeuko, R.O. & A.E. Chira. (2005). *Fonetiiks na fon loj Igbo*. Awka: Kristophel Publishers.

Ikeke nw , Clara, Ezikeojiak ,P.A. ban ,An sike&Ug j ,Jumbo. (1999). *F n l j na grama Igbo*. Ibadan: University Press PLC.

walaka, MaryAngela. (1996). *Fon l j na nt as s Igbo*. Ibadan; Kraft Books.

MODUL 4 DAOLU

m r maka daume, mgbochiume na etu ha si an k n na nkejiokwu. Na modul a, ga-ag edemedede gbasara daolu. N'as s Igbo, b daume na myiri daume na-ebu akara da olu. daolu p tara ogo olu e jiri kp p ta da ma b daokwu. Ikeke nw na nd z (1999) kwup tara na as s b la na-enwe mgbanwe n'olu mkp p ta ya. Nke a p tara na o nweghi as s a na-eji otu d olu akp p ta. As s b la nwere ndanusoromkp r da okwu, nkebi okwuna ah r okwu ya.

N'as s mba wa, a na-enwe d ma b ngalaba as s ab site n'etu e si eji mgbanwe olu ha emebe ngh ta p r iche. b r na mgbanwe olu nwere ike iweta ngh ta p r iche n'etiti mkp r okwuna ibe ya n'as s , a na-as na b as s da olu. N'aka nke z , b r na mgbanwe olu na-eweta ngh ta p r iche n'etiti ah r okwu na ibe ya ma b n'etiti nkebi okwu na ibe ya, a na-as na as s d etu a b as s ndebe olu. N'as s ndebe olu, anagh ejikebe mgbanweolu emebe ngh ta p r iche n'etiti mkp r okwu na ibe ya.

t t as s mba Afr ka na f d as s mba Eshia d ka Ikeke nw na nd z (1999) dere b as s da olu. Igbo b as s da olu. E ji akara daolu egosi d r da olu e jiakp p ta nkeji okwu d na mkp r okwu d iche iche.

Yunit an d na modul a. Ha b nd[a na-esote:

- Yunit 1 Nk wa na d d da olu
- Yunit 2 r daolu na-ar n'as s Igbo
- Yunit 3 kanye akara da olu na mkp r edide
- Yunit 4 Usoro nkanye akara da olu

YUNIT 1 NK WA NA D D DA OLU

ND NA

- 1.0 Mkp lite
- 2.0 Mbunuche
- 3.0 Nd na kp m kw m
 - 3.1 daolu na d d ya
- 4.0 Mmechi
- 5.0 Nch k ta
- 6.0 Ihe Omume
- 7.0 Nr t aka/Ng mi

1.0 MKP LITE

da olu b olu r go ma b dadamgbe a na-akp p tamkp r da. Etu e siri kp p ta mkp r daokwu na-enye ya d echiche o nwere. Akara a na-akanye iji gosi ogo olu da ka a na-akp akara da olu. Akara da olu n n d ka mkp r da nt kwas . Etu mkp r edide as s si enye echiche d iche n'okwu ka daolu si enyekwa (h mkp iche nsina da olu). Na modul a, e lebara anya na mp tara da olu na d d ya, njirimara akara da olu, dachi na dausoro mkp r okwu, r akara da olu na- ar na usoro nkanye akara da olu.

2.0 MBUNUCHE

Na ngw cha yunit a, ga-enwe ike:

- k waa ihe da olu b
- dep ta d d da olu e nwere n'Igbo
- mata mkp r da as s nd na-ebu akara da olu n'Igbo.

3.0 ND NA KP M KW M

3.1 daoluna d d ya

E nwere d d akara daolu at n'Igbo. Lee ha:

akara daelu ()

akara daala ()

akara dans da (̄)

Lee m ma at ha na mkp r okwu

a. ákwá - ube

ákwà – àgà, ngwa myichi ah

àkwà - ngwa edine, ogodo

àkwá - eju ime uriom

b. óké - az any

ókè - ngige

òkè - orubere

- òké - okerekwu
 d. éz - ngwa tari ire
 ézè – onye ndu
 e. m - ihe ma
 mà - ngwa ogbugbu ihe
 f. i gw - eze na-ach obodo
 i gwe – e ji emep ta ihe d ka ite na
 i gwe – t t ihe
 g. k - na-agba ihe
 k - ak na ba
 k - k az

Na mkp r okwu nd d na ‘a-g’, ihe d iche ab gh ns pe. b da olu. Mkp r okwu nd a niile nwere otu ns pe. Ihe e jiri nwee ngh ta p r iche na mkp r okwu nd ah b ndaghar da olu. Mgbe eji da olu ar d r d etu a, a na-as na r ya b nke t as s .

Njirimara akara da olu

- a. daolu elu na daolu ala nwere ike malite okwu mana dans da enweghi ike malite okwu Igbo kw r onwe ya.
 b. da oluelu na daolu ala nwere ike isote daala mana daolu ns da anagh esote daolu ala.
 ch. daolu ns da na-esote naan daolu elu, nagh esote daala.

NNWALE ONWE

- i. da olu ole ka e nwere n’Igbo?
 ii. Ked da olu nd nwere ike malite okwu n’Igbo?

4.0 MMECHI

Igbo b as s da olu. da olu p tara ogo olu e jiri kp p ta daokwu. Ya b , ogo olu mmad na-ar go ma b ar da n’ da na-ap ta mgbe a na-akp p taokwu. da olu na-eweta mgbanwe na mkp r okwu.

5.0 NCH K TA

da olu na-eweta ngh ta d iche iche n'etiti mkp r okwu nd nwere otu ns pe. Akara e ji egosi ogo olu ka a na-akp akara da olu. Ha d at n'Igbo – akara da olu elu, akara da olu ala na akara da olu ns da.

6.0 IHE OMUME

1. Ked ihe da olu b ?
2. Olee mkp r da as s nd na-ebu akara da olu n'Igbo?

7.0 NR T AKA/NG MI

Ezeuko, R.O. &Chira, A.E. (2005). *Fonetiiks na fon loj Igbo*. Awka: Kristophel Publishers.

Ikeke nw , Clara, Ezikeojiak , P.A., ban , An sike & Ug j Jumbo. 1999. *F n l j na grama Igbo*. Ibadan: University Press PLC.

YUNIT 2 R DA OLU NA-AR N'AS S IGBO

ND NA

- 1.0 Mkp lite
- 2.0 Mbunuche
- 3.0 Nd na kp m kw m
 - 3.1 r da oluna-ar n'as s Igbo
 - 3.1.1 Uru da olubara
 - 3.1.2 dachi mkp r okwu na dausoro mkp r okwu
- 4.0 Mmechi
- 5.0 Nch k ta
- 6.0 Ihe Omume
- 7.0 Nr t aka/Ng mi

1.0 MKP LITE

b ihe doro anya na da olu na-ar r p r iche n'Igbo. kachas n'inye ngh ta mkp r okwu nd ns pe ha b otu. Na yunit a, e lebara anya n' r d iche iche da olu na-ar tinyekwara dachi mkp r okwu na dausoro mkp r okwu.

2.0 MBUNUCHE

Na ngw cha yunit a, ga-enwe ike:

- kwup ta r d iche iche
- k waa ihe dachi mkp r okwu b
- k waa ihe dausoro mkp r okwu b
- inye nd miche d n'etiti dachi mkp r okwu na dausoro mkp r okwu.

3.0 ND NA KP M KW M

3.1 r da oluna-ar n'as s Igbo

3.1.1 Uru da olubara

Uru f d da olu bara n'as s Igbo d ka Iked mma (2013) dep tara g nyere:

- a. da olu na-eme ka ngh ta d n'ihe a na-ekwu. m ma at :

‘Nd a b nd otu otu’.

E tinye akara da olu n'ah r okwu a, ga-eme ka ngh tad n'ihe a na-ekwu.

Lezie ya:

‘ d à b d ót òtù’.

b. da olu na-egosi nd miche d n’etiti mkp r okwu nd nwere otu edide ma nwee ngh ta na mkp p ta d iche, ma at :

ísí

ísì

ìsì

ís

ch. A na-eji da olu egosip ta ngh ta mkp r okwu n r onwe ya nwere, ya na ngh ta mkp r okwu ah nwere mgbe d n’usoro okwu, d.k.

	dachi		danuusoro
a.	ányá	}	ányá él
b.	élé		
ch.	úkwú	}	úkw òrómá
d.	òrómá		

d. A na-eji da olu egosip ta nd miche d n’etiti ah r okwunkwusara na ah r okwu aj j , d.k.

Órutere ébé à. ah r okwu nkwusara

Ò rùtèrè ébé à? ah r okwu aj j

Ó sùrì rí. ah r okwu nkwusara

Ò sùrì rí? ah r okwu aj j

Há gàrà íhé. ah r okwu nkwusara

Hà gàrà íhé? ah r okwu aj j

e. Nkanye akara da olu na-emekwa ka ihe mgbagwoju anya d n’ihe a na-ekwu n’aka nd nwe as s na nd na-am ya am p . Mgbe g kwudoromkp r okwu odee tinyere n’ederede, nke nwere ike site n’olund odee ah , g na-agh ta ya ma b r na a kanye akara ya da olu.

3.1.2 dachi mkp r okwu na dausoro mkp r okwu dachi mkp r okwu

Nke a b da mkp r okwu na-ada mgbe kw r onwe ya, ya b , mgbe mkp r okwu d otu otu; b gh mgbe d n'ime ah r okwu, ma at :

a. dí

b. òké

ch. ányá

d. ógó

dausoro mkp r okwu

Nke a b da mkp r okwu na-enwe mgbe d n'usoro okwu. ya b , mgbe ya na mkp r okwu z n sobere n n'ime ah r okwu. b r na okwu nwere dachi abata n'ime ah r okwu, mgbe f d , na-agbanwe, m ma at :

a. Ézé ké nà-àd k r k r .

b. mara má na-ese okwu.

ch. Égó igwe ad z gh ugbu a.

d. Ach r m kw ew

NNWALE ONWE

i. G n b dachi mkp r okwu?

ii. G n b dausoro mkp r okwu?

iii. ch. Dep ta uru at da olu bara.

4.0 MMECHI

E lebara anya n' f d uru da olu bara n'as s Igbo; a ch p tara na da olu b isi a h r kwaba okpu na mkp p ta mkp r okwu. z kwa, a h kwara na oge f d , b gh da olumkp r okwu nwere mgbe n r onwe ya ka na-enwe mgbe ya na mkp r okwu nd z n k r n . Nn k mkp r okwu na-ebute mgbanwe n' da olumkp r okwu. Mgbe na-enye okwu kw r onwe ya echiche, na-ar r kemkp r okwu mana mgbe gbanwere da okwu d n'ime ah r okwu, na-ar r ke t as s .

5.0 NCH K TA

Na nch k ta, f d uru da olu bara n'as s Igbo b nd a: da olu na-eme ka ngh ta d n'ihe a na-ekwu. da olu na-egosi nd miche d n'etiti mkp r okwu nd nwere otu mkp r edide ma nwee ngh ta na mkp p ta d iche. A na-eji da olu egosip ta ngh ta mkp r okwu n r onwe ya nwere ya na ngh ta mkp r okwu ah nwere mgbe n n'usoro okwu. A na-eji da olu egosip ta nd miche d n'etiti ah r okwu nkwusara na ah r okwu aj j . da olu na-emekwa ka ihe mgbagwoju anya d n'ihe a na-ekwu n'aka nd nwe as s na nd na-am ya am fosaa site n' kanye akara da n'okwu ah .

6.0 IHE OMUME

1. N'uche g , o nwere nd miche d n'etiti dachi mkp r okwu na dausoro mkp r okwu?
2. Were m ma at ab ab nke g gosip ta nd miche d n'etiti ah r okwu nkwusara na ah r okwu aj j .

7.0 NR T AKA/NG MI

- Iked mma, E.C. (2013). da olu na akara da olu. N'ime gbal , U.J., Sam z chukwu na Chinedum Enweonye (nhz.). *s s , od de na g g Igbo*. Ihu 114-158. Ikosi-Ketu: Children World Publishers.
- Ikeke nw , Clara, Ezikeojiak , P.A. ban , An sike & Ug j , Jumbo. (1999). *F n l j na grama Igbo*. Ibadan: University Press PLC.

YUNIT 3 KANYE AKARA DA OLU NA MKP R OKWU: IHE ND KWES R KA A MATA

ND NA

- 1.0 Mkp lite
- 2.0 Mbunuche
- 3.0 Nd na kp m kw m
 - 3.1 Kanye akara da oluna mkp r okwu
 - 3.1.1 Ihe nd a ga-ebu n'uche gbasara akara da olu
 - 3.1.2 Akara da olu na nkeji okwu
- 4.0 Mmechi
- 5.0 Nch k ta
- 6.0 Ihe Omue
- 7.0 Nr t aka/Ng mi

1.0 MKP LITE

O nwegas r ihe nd kwes r na a ga-amata mgbe b la a na-ach kanye akara da olu. Na yunit a, e lebara anya n' z ihe ab . Ha b :

- a. Ihe nd a ga-ebu n'uche gbasara akara da olu
- b. Akara da olu na nkeji okwu

2.0 MBUNUCHE

Na ngw cha yunit a, ga-enwe ike:

- m ta z e si akanye akara da olu
- mata ihe nd ekwesighi ime mgbe a na-akanye akara da olu
- kanye akara da olu na mkp r okwu d iche iche.

3.0 ND NA KP M KW M

3.1 kanye akara da oluna mkp r okwu

3.1.1 Ihe nd a ga-ebu n'uche gbasara akara da olu

- i. A na-akanye akara da olu n'elu da-umea, e, i, , o, , u, namyiri daume m na n.
- ii. A nagh eji dans da ebido kanye akara da olu namkp r okwu n r onwe ya
- iii. dans da anagh eso daala n'okwu n r onwe ya.
- iv. A ga-eji uche kerie mkp r okwu na nkeji okwu ya ma kanye nkeji b la otu akara da olu.

- v. A ga-amata na oge f d , okwu mbite na-agbagha usoro nkeji okwu Igbo

3.1.2 Akara da olu na nkeji okwu

Akara da olu na mkp r okwu nwere nkeji okwu ab :

daelu daelu

ésú

íké

i mi

u kwu

daala daala

àlà

èlù

èdò

a ja

daelu dans da

ézē

égō

óhī

a r ⁻

daelu daala

ídò

ézì

a kwa

z

daala daelu

èkú

àkwá

òké

t

Akara da olu na mkp r okwu nwere nkeji okwu at :

daelu daelu daelu

ósísí

émúmé

ékíké

daala daala daala

èbùbè

ìzìzì

òkùkò

NNWALE ONWE

Kanye akara da olu dabara adaba na mkp r okwu nd a d n'okpuru:

a. nya

b. d

ch. nk w kw

d. g

e. d da

4.0 MMECHI

E lebara anya n'ihe nd kwes r ka a mata mgbe b la na-ach kanye akara da olu. Ihe nd ah b :

a. Ihe nd a ga-ebu n'uche gbasara akara da olu

b. Akara da olu na nkeji okwu

5.0 NCH K TA

A b a na nkanye akara da olu na mkp r okwu nwere nkeji okwu ab , a ga-enwe akara nd a:

daelu daelu

daala daala

daelu dans da

daelu daala

daala daelu

d mkpa mata na agagh enwe * daala dans da.

Akara da olup tara ihe na mkp r okwu nwere nkeji okwu at b nd
a:

daelu daelu daelu

daala daala daala

6.0 IHE OMUME

Olee akara da olu ole mkp r okwu nd a ga-enwe?

- a. mmechi
- b. nch k ta
- c. ch. aj j
- d. nnwale
- e. edensib a

7.0 NR T AKA/NG MI

Ezeuko, R.O. &Chira, A.E. (2005). *Fonetiiks na fon loj Igbo*. Awka: Kristophel Publishers.

Iked mma, E.C. (2013). da olu na akara da olu. N'ime gbal , U.J., Sam z chukwu na Chinedum Enweonye (nhz.). *s s , od de na g g Igbo*. Ihu 114-158. Ikosi-Ketu: Children World Publishers.

YUNIT 4 USORO NKANYE AKARA DA OLU

ND NA

- 1.0 Mkp lite
- 2.0 Mbunuche
- 3.0 Nd na kp m kw m
 - 3.1 Nd d iche iche wep tara usoro nkanye akara da olu
- 4.0 Mmehi
- 5.0 Nch k ta
- 6.0 Ihe Omume
- 7.0 Nr t aka/Ng mi

1.0 MKP LITE

Nd kamm ta d iche iche kwenyere na e nwere d akara da olu at n'as s Igbo. Kaosilad , nd r nd r d ugbu a b etu a ga-esi beleta n g ha n'ederede. A h tara kanye akara da oluniile d ka nnukwu r , nke na-emekwa ka g ihe e dere ede h a nnukwu ah .

2.0 MBUNUCHE

Na ngw cha yunit a, ga-enwe ike:

- mata nd d iche iche wep tara akara nkanye da olu n'Igbo
- k was iwu nkanye akara da olu e nwegas r .

3.0 ND NA KP M KW M

3.1 Nd d iche iche wep tara usoro nkanye akara da olu

Iji mee ka nkanye akara da olu d mfe, ma mee ka g g akw kw ag mag Igbo d mfe, nd kamm ta n'ihe gbasara akara da olu wep tara usoro nkanye nd a:

A. Williamsonna Emenanj

Nd a wep tara iwu nkanye akara da olu nd a:

- i. A gagh akanye akara na mkp r okwu nd nwere naan akara daelu, ma at

ányá anya

étútó etuto

- ii. Kanye akara da olu n' daala niile, m ma at :

àlà àlà

èdèrè èdèrè

iii. A na-akanye akara n' dans da niile. Lee m ma at :

ér er

íj j ij j

B. Green na Igwe (1963)

Iwu nkanye akara da olu, nke Green na Igwe, Emenanj na Williamson b otu(H Mbah na Mbah, 2010 & Mbah,2018).

CH. R.C. Abraham

Lee usoro kanye akara da olu nke Abraham wep tara:

i.Nkeji okwu niile nd nwere akara daelu ga-ad na nnukwu mkp r edemede. ma at :

ányá ANYA

étútó ETUTO

ii.Nkeji okwu niile nd nwere akara dans da ga-ad n'obere mkp r edemede ebe nd nke daelu butere ya z ga-ad na nnukwu mkp r edemede, m ma at :

ér Ero

íj ji Ijiji

iii. Nkeji okwund nwere akara daala ga-ad n'obere mkp r edemede, ma at :

àkwà na

èdò edo

D. Welmers na Nwachukwu (1981)

Iwu nkanye akara da olu nke Welmers na Nwachukwu b :

i. Na mkp r okwu, naan otu d d da olu d ; a ga-akanye akara naan na nkeji okwu nke mb , ma at :

ékwúmékwú ékwumekwu

àkàrà àkara

ii. N'ebe e nwere ngwak r ta da olu, a ga-akanye naan nd malitere nkeji okwu nke b la, ma at :

ányá kà kpà èlé ánya kà kpà elé

Ìgbò àmáká Ìgbo amáka.

iii. Were akara da oluelu () dochie anya da olu elu na da olu ns da. Mana b r na akara () ap ta ihe na nkeji okwu ab n dewere onwe ha, nke mb b da olu elu ebe nke ab b da olu ns da.

íj j íjíji

ér éró

mír mirí

NNWALE ONWE

a. Lee usoro nkanye akara da olu nd a ma dep ta onye ma b nd wep tara ha:

i. áká AKA

ii. Ìgbò Igbo

iii. ósísí ósisi

iv. òménàlà òménàla

4.0 MMECHI

A h tara kanye akara da olu niiled ka nnukwu r nke na-emekwa ka g ihe e dere ede h a ah . Etu a ga-esi belata nh amah a na-enwe na nkanye akara da olu n'ozuzu oke b ihe kpaliri nd kamm ta d iche iche iwep ta iwu a ga-agbaso mgbe a ch r kanye akara da olu n'Igbo.

5.0 NCH K TA

E wep tara iwu nkanye akara da olu Igbo iji belata n g akara da olu na-ap ta ihe n' g g na odide Igbo. Nd kamm ta n'ihe gbasara akara da olu wep tara usoro nkanye akara da olu b :

R.C. Abraham

Emenanj na Williamson

Green na Igwe, Welmers na Nwachukwu

6.0 IHE OMUME

1. Ked iwunkanye akara da olu Green na Igwe wep tara?
2. O nwere ihe jik tara iwu nkanye akara da olund a niile n ?

6.0 NR T AKA/NG MI

Mbah, B.M. (2018). *Generalised Igbo syntax*. Awka: Amaka Dreams Ltd.

Mbah, B.M. & Mbah, E.E. (2010). *Topics in phonetics and phonology: Contributions from Igbo*. Nsukka: AP Express Publishers.

Nwachukwu, P.A. (1995). *Tone in Igbo syntax*. Nsukka: Igbo Language Association.